



Stockton City Hall Relocation Waterfront Towers Site Survey

Site Survey Report



OWNER**SITE SURVEY DATE(S)****ARCHITECT**

01-01-2021 - 02-25-2021

CONTRACTOR**PROJECT** Stockton City Hall Relocation Waterfront Towers Site Survey

Scope of Services

The openings described in the Door Inspection List at the project location and dates shown were examined as part of opening survey report by an ASSA ABLOY EDSSG professional inspector(s). The data collected may include, but is not limited to, detailed descriptions of the installed door, hardware, and electronic access control components, proper functioning of the opening, and general compliance with fire and life safety building codes.

The purpose of the summary report, and associated digital images, is to describe the location and condition of the door openings as of the date of the survey. The survey report is not intended to constitute a warranty as to the continued compliance or functional operation of any of the door openings and associated hardware or access control systems.

ASSA ABLOY EDSSG is held harmless from and against damages incurred as a result of variances from any building codes or regulations in place by the authority having jurisdiction ("AHJ") over the Owner or its facilities that impact the inspection services provided if ASSA ABLOY EDSSG is not informed of such requirements in advance by the Owner.

This summary report is provided in conjunction with the opening survey services performed by an ASSA ABLOY EDSSG inspector(s) and does not cover cost of repair or any other services with respect to the openings.

Questions regarding this summary report can be directed to the following Openings Studio Building Technologies Consultant:

NAME OF INSPECTOR: Hoyos, Jeremy

CONTACT INFORMATION: jeremy.hoyos@assaabloy.com

SIGNATURE: _____

GENERAL REMARKS:



Door Site Survey List

Mark	Building	Level	Room	Fire/Smoke Rating	Issue Codes	Date	Technician
1-100B	1	1	STAIR 2	90			
1-101A	1	1	VESTIBULE				
1-101B	1	1	VESTIBULE				
1-101C	1	1	VESTIBULE				
1-102B	1	1	VESTIBULE				
1-102C	1	1	VESTIBULE				
1-103A	1	1	PUBLIC LOBBY				
1-106A	1	1	CITY CLERK RECEPTION				
1-107B	1	1	OPEN OFFICE				
1-108A	1	1	SGL OCC WOMEN	90			
1-109A	1	1	SGL OCC MEN	90			
1-110A	1	1	MECH RM	None			
1-111A	1	1	KITCHEN / PREP				
1-111B	1	1	CORRIDOR				
1-112A	1	1	CORRIDOR	90			
1-115A	1	1	OPEN OFFICE				
1-116A	1	1	KEY PRESENTER / STAGING ROOM	20			
1-118A	1	1	STOR	20			
1-120B	1	1	ANTE ROOM				
1-130A	1	1	ELECT. ROOM	20	CL3, D2, F9	02-19-2021	J Hoyos
1-131A	1	1	STOR.	90	CL3	02-19-2021	J Hoyos
1-132A	1	1	HALLWAY				
1-132B	1	1	HALLWAY		LO1	02-19-2021	J Hoyos
1-132C	1	1	HALLWAY				
1-133A	1	1	VESTIBULE				
1-134A	1	1	CHANNEL 97 STORAGE	None			
1-137A	1	1	LIBRARY / MAP ROOM				
1-139A	1	1	CONF. ROOM		D2	02-19-2021	J Hoyos
1-200A	1	2	STAIR 1	90	D2, F9	02-19-2021	J Hoyos
1-200B	1	2	STAIR 2	90			
1-204A	1	2	MEN'S	20			
1-205A	1	2	ELECT. ROOM	20	F9	02-19-2021	J Hoyos
1-206A	1	2	WOMEN'S	None			
1-207A	1	2	JANITOR				
1-208A	1	2	CONFERENCE ROOM	20			
1-209A	1	2	CONF. ROOM	20			



Door Site Survey List

Mark	Building	Level	Room	Fire/Smoke Rating	Issue Codes	Date	Technician
1-210A	1	2	OPEN OFFICE	20			
1-212A	1	2	OPEN OFFICE				
1-213A	1	2	CONFERENCE ROOM				
1-214A	1	2	OFFICE				
1-215A	1	2	OFFICE				
1-216A	1	2	OFFICE				
1-217A	1	2	OFFICE				
1-219A	1	2	OFFICE				
1-221A	1	2	OFFICE				
1-224A	1	2	CIRC.				
1-225A	1	2	SECURE FILE ROOM	20			
1-226A	1	2	CITY CLERK RECORD STORAGE	None			
1-230A	1	2	CORRIDOR	20			
1-232A	1	2	OFFICE	None			
1-241A	1	2	STOR.	90			
1-300A	1	3	STAIR 1	90			
1-300B	1	3	STAIR 2	90			
1-304A	1	3	MEN'S				
1-305A	1	3	ELECT. ROOM	90			
1-306A	1	3	WOMEN'S				
1-308A	1	3	TRAINING ROOM	20			
1-311A	1	3	OFFICE				
1-312a	1	3	OFFICE				
1-315A	1	3	OFFICE				
1-320A	1	3	CLOSET				
1-321B	1	3	IT BREAKROOM				
1-323A	1	3	OFFICE				
1-324A	1	3	OFFICE				
1-325A	1	3	OFFICE				
1-326A	1	3	COPY AREA / INTERNS	20			
1-328A	1	3	CONFERENCE ROOM				
1-329A	1	3	OFFICE				
1-330A	1	3	OFFICE				
1-331A	1	3	OFFICE				
1-332A	1	3	OFFICE				



Door Site Survey List

Mark	Building	Level	Room	Fire/Smoke Rating	Issue Codes	Date	Technician
1-334A	1	3	DATA / TELECOM (MPOE) ROOM				
1-400A	1	4	STAIR 1	90	F9	02-19-2021	J Hoyos
1-400B	1	4	STAIR 2	90	ED5, F9	02-19-2021	J Hoyos
1-404A	1	4	MEN'S				
1-405A	1	4	ELECT. ROOM	90	CL3, F9	02-19-2021	J Hoyos
1-406A	1	4	WOMEN'S	20			
1-407A	1	4	JANITOR				
1-408A	1	4	BREAK. RM.				
1-411A	1	4	OPEN OFFICE				
1-412A	1	4	OFFICE				
1-413A	1	4	OPEN OFFICE				
1-414A	1	4	OFFICE				
1-415A	1	4	OFFICE				
1-418A	1	4	CONFERENCE ROOM				
1-419A	1	4	OFFICE				
1-423A	1	4	CONFERENCE ROOM	90			
1-428A	1	4	CONFERENCE ROOM		LO2	02-19-2021	J Hoyos
1-430A	1	4	OFFICE		LO1	02-19-2021	J Hoyos
1-432A	1	4	OFFICE				
1-433A	1	4	OFFICE				
1-434A	1	4	OFFICE				
1-440A	1	4	BREAK. RM.				
1-500A	1	5	STAIR 1	90	F9, H4	02-18-2021	J Hoyos
1-500B	1	5	STAIR 2	90			
1-504A	1	5	MEN'S				
1-505A	1	5	ELECT. ROOM	20	F9, LO5	02-18-2021	J Hoyos
1-506A	1	5	WOMEN'S				
1-507A	1	5	JANITOR				
1-520A	1	5	CONFERENCE ROOM				
1-521A	1	5	OFFICE				
1-523A	1	5	OFFICE				
1-526A	1	5	CIRCULATION		ST6	02-18-2021	J Hoyos
1-530A	1	5	SMALL CONFERENCE ROOM				
1-530B	1	5	SMALL CONFERENCE ROOM				
1-531A	1	5	OFFICE				



Door Site Survey List

Mark	Building	Level	Room	Fire/Smoke Rating	Issue Codes	Date	Technician
1-532A	1	5	OFFICE				
1-534A	1	5	OFFICE				
1-542A	1	5	OFFICE				
1-600A	1	5	ROOF ENCL				
1-601A	1	6	ROOF ENCL		CL3	02-19-2021	J Hoyos
1-602A	1	6	ROOF ENCL				
2-000A	2	Basement	STAIR 1	90	F9	02-17-2021	J Hoyos
2-000B	2	Basement	STAIR 2	90	D2, F9	02-17-2021	J Hoyos
2-002A	2	Basement	POLICE EVIDENCE STORAGE	None			
2-003A	2	Basement	MECH.	None	CL3, F9	02-17-2021	J Hoyos
2-005A	2	Basement	CORRIDOR	None			
2-007A	2	Basement	ELECT. ROOM	None	LO2	02-17-2021	J Hoyos
2-009A	2	Basement	IT NETWORK LAB / PC SUPPORT				
2-011A	2	Basement	PUBLIC WORKS MAINTENANCE ROOM	None			
2-017A	2	Basement	MAIL ROOM	20	CL3	02-17-2021	J Hoyos
2-101A	2	1	PUBLIC LOBBY				
2-111A	2	1	PUBLIC LOBBY				
2-122A	2	1	CORRIDOR	60			
2-123B	2	1	OPEN OFFICE				
2-130B	2	1	OPEN OFFICE REVENUE				
2-200A	2	2	STAIR 1	90	F9	02-17-2021	J Hoyos
2-200B	2	2	STAIR 2	90			
2-204A	2	2	MEN'S	20			
2-206A	2	2	WOMEN'S	20	CL6, F2, LO1	02-17-2021	J Hoyos
2-208A	2	2	CIRC.				
2-212A	2	2	OFFICE				
2-213A	2	2	OFFICE		OT	02-16-2021	J Hoyos
2-214A	2	2	OPEN OFFICE				
2-218A	2	2	OPEN OFFICE	20			
2-219A	2	2	OFFICE				
2-220A	2	2	OFFICE				
2-223A	2	2	OPEN OFFICE	20			
2-225A	2	2	CONF. ROOM				
2-226B	2	2	BREAK ROOM	20			
2-228A	2	2	OFFICE				
2-229A	2	2	OFFICE				

Door Site Survey List

Mark	Building	Level	Room	Fire/Smoke Rating	Issue Codes	Date	Technician
2-230A	2	2	SHARED OFFICE				
2-231A	2	2	OPEN OFFICE				
2-232A	2	2	OPEN OFFICE				
2-234A	2	2	CORRIDOR	90			
2-300A	2	3	STAIR 1	90	LO3, LO6	02-16-2021	J Hoyos
2-300B	2	3	STAIR 2	90	F9, LO1, LO3, OT	02-16-2021	J Hoyos
2-304A	2	3	MEN'S	20			
2-305A	2	3	ELEC ROOM	20	F8, F9	02-16-2021	J Hoyos
2-306A	2	3	WOMEN'S	20			
2-307A	2	3	JANITOR	20			
2-313A	2	3	CONFERENCE ROOM				
2-315A	2	3	MAIL ROOM	20			
2-317A	2	3	OFFICE	20			
2-318A	2	3	CIRCULATION				
2-319A	2	3	OFFICE				
2-320A	2	3	OFFICE				
2-321A	2	3	WORKSPACE CONFERENCE				
2-322A	2	3	OFFICE				
2-330A	2	3	CORRIDOR		H1, PP1	02-16-2021	J Hoyos
2-331A	2	3	OFFICE	20	F8	02-16-2021	J Hoyos
2-335A	2	3	OFFICE				
2-337A	2	3	CORRIDOR	20	D2	02-16-2021	J Hoyos
2-338A	2	3	BREAK ROOM				
2-340A	2	3	OFFICE				
2-341A	2	3	OFFICE				
2-342A	2	3	OFFICE				
2-346B	2	3	TRAFFIC CONTROL ROOM	No Label Access	EA2	02-16-2021	J Hoyos
2-400A	2	4	STAIR 1	None	F9, OT	02-17-2021	J Hoyos
2-400B	2	4	STAIR 2	90	F9	02-17-2021	J Hoyos
2-405A	2	4	ELECT. ROOM	20	F8	02-17-2021	J Hoyos
2-408A	2	4	BREAK ROOM	20			
2-411A	2	4	OFFICE				
2-412A	2	4	OFFICE				
2-413A	2	4	OFFICE				
2-414A	2	4	CONFERENCE ROOM	20			
2-414B	2	4	CONFERENCE ROOM				
2-415A	2	4	OFFICE				



Door Site Survey List

Mark	Building	Level	Room	Fire/Smoke Rating	Issue Codes	Date	Technician
2-416A	2	4	OFFICE				
2-417A	2	4	OFFICE				
2-418A	2	4	OFFICE				
2-421A	2	4	PROJECT CONFERENCE ROOM		LO1	02-17-2021	J Hoyos
2-422A	2	4	OFFICE				
2-423A	2	4	CORRIDOR	20			
2-425A	2	4	PROJECT CONFERENCE ROOM				
2-426A	2	4	OPEN OFFICE	20			
2-431A	2	4	OFFICE				
2-435A	2	4	CIRCULATION				
2-436A	2	4	CIRCULATION				
2-500A	2	5	STAIR 1	90	F9, LO1	02-18-2021	J Hoyos
2-500B	2	5	STAIR 2	90	F9	02-18-2021	J Hoyos
2-504A	2	5	MEN'S	20			
2-505A	2	5	ELECT. ROOM	None	F8, GA1	02-18-2021	J Hoyos
2-506A	2	5	WOMEN'S	20			
2-507A	2	5	JANITOR	20			
2-509A	2	5	STOR				
2-513A	2	5	OFFICE				
2-513B	2	5	STOR				
2-514A	2	5	OFFICE				
2-515A	2	5	OFFICE				
2-517A	2	5	OFFICE				
2-518A	2	5	OFFICE		CL3	02-18-2021	J Hoyos
2-519A	2	5	OFFICE				
2-520A	2	5	OFFICE				
2-521A	2	5	CONFERENCE ROOM				
2-521B	2	3	CONFERENCE ROOM				
2-524A	2	5	OFFICE				
2-526A	2	5	CONFERENCE ROOM	20			
2-528A	2	5	CORRIDOR				
2-529A	2	5	WORKROOM	None			
2-530A	2	5	WORKROOM	20			
2-531A	2	5	OFFICE				
2-532A	2	5	OFFICE				
2-533A	2	5	AUDITOR WORKROOM				



Door Site Survey List

Mark	Building	Level	Room	Fire/Smoke Rating	Issue Codes	Date	Technician
2-535A	2	5	CONFERENCE ROOM				
2-536A	2	5	OFFICE				
2-600B	2	6	ROOF ENCL	None	D2, GA1, H4	02-19-2021	J Hoyos
2-601A	2	6	ROOF ENCL		CL3, D2, H4	02-19-2021	J Hoyos
2-602A	2	6	ROOF ENCL		CL3, D2, H4	02-19-2021	J Hoyos
2-ADD.A DA	1	1	VESTIBULE				

Issues Key

Frame Issues

- F1, Not secured to the wall
- F2, Damaged/Rust through on frame
- F3, Frame is out of alignment
- F4, Missing/Painted/Illegible label
- F5, Incorrect glass installed
- F6, Broken/damaged glass
- F7, Missing glazing bead/glazing bead screws
- F8, Unused fastener holes/wrong frame prep
- F9, Improper field modification or repair

Door Issues

- D1, Rust-through on door
- D2, Door damaged (bent, dented, delaminating)
- D3, Missing/Painted/Illegible label
- D4, Incorrect/Missing/Broken glass
- D5, Missing glazing bead/lite kit screws
- D6, Incorrect lite kit installed
- D7, Loose lite kit
- D8, Unused fastener holes/wrong door prep
- D9, Improper field modification or repair
- D10, Improper plant-ons
- D11, Unapproved louver

Operation Issues

- O1, Door does not swing freely
- O2, Door does not close completely
- O3, Door does not securely latch
- O4, Electric door release does not allow door to close
- O5, Door drags on floor, rubs frame/rubs other door
- O6, Paired doors are not coordinated
- O7, Incorrect clearance (top of door to frame)
- O8, Incorrect clearance (hinge edge to frame)
- O9, Incorrect clearance (lock edge to frame)
- O10, Incorrect clearance (between doors)
- O11, Incorrect clearance (door bottom to floor)
- O12, Door Blocked

Hinges/Pivots

- H1, Missing hinge(s)/Pivot
- H2, Incorrect hinge(s)/Pivot
- H3, Binding hinge(s)
- H4 Hinge fastener(s) stripped, missing or broken
- H5, Damaged/defective hinge(s)
- H6, Incorrectly shimmed

Door Bolts

- BO1, Missing/damaged/incorrect bolt
- BO2, Missing/damaged/incorrect strike
- BO3, Bolt(s) not engaged/aligned with strike
- BO4, Missing/incorrect rub plate(s)/fastener(s)

Locks

- LO1, Lock missing/damaged/not securely fastened
- LO2, Lock strike missing/damaged/out of alignment
- LO3, Latchbolt missing/damaged/incorrect application
- LO4, Non-fire rated latchbolt
- LO5, Latchbolt(s) not engaging strike/binding
- LO6, Lock/strike fastener(s) stripped, missing or broken
- LO7, Electric lock/maglocks not integrated with access control
- LO8, Electric lock/maglocks not integrated with fire alarm
- LO9, Unapproved deadbolt/latchbolt/hook

Electric Strike

- ES1, Electric strike missing/damaged/incorrect application
- ES2, Electric strike fastener(s) stripped, missing or broken
- ES3, Non-fire rated electric strike
- ES4, Electric strike not integrated with access control
- ES5, Electric strike not integrated with fire alarm

Protection Plates & Trim

- KP1, Protection plate missing label
- KP2, Protection plate fasteners stripped, missing or broken

Coordinators

- CO1, Coordinator missing/damaged
- CO2, Coordinator fastener(s) stripped, missing or broken
- CO3, Unacceptable quality/material/finish

Fire Exit Hardware

- MU1, Mullion missing/broken/not securely fastened
- MU2, Mullion fastener(s) stripped, missing or broken
- ED1, Missing fire exit device
- ED2, Exit device is not fire rated (missing label)
- ED3, Missing/damaged latchbolt(s)/fire bolt(s)/components
- ED4, Missing/damaged vertical rod(s)
- ED5, Exit device/trim not securely fastened
- ED6, Exit device does not latch
- ED7, Exit device fastener(s) stripped, missing or broken
- ED8, Exit device not integrated with access control
- ED9, Exit device not integrated fire alarm
- ED10, Exit device actuating portion does not extend half of door width
- ED11, Special Locking Arrangements/Access Controlled Egress doors are non-compliant
- ED12, Missing \THIS DOOR TO REMAIN OPEN WHEN THE SPACE IS OCCUPIED\ sign
- ED13, Missing \PUSH/PULL UNTIL ALARM SOUNDS, FREE EGRESS AFTER 15 SECONDS sign

Overhead Stops

- OH1, Overhead stop/holder missing/damaged/broken/installed incorrectly
- OH2, Mechanical hold-open installed
- OH3, Fastener(s) stripped, missing or broken

Door Closers

- CL1, Missing/damaged door closer(s)
- CL2, Leaking closer
- CL3, Missing/damaged/broken arm
- CL4, Does not close door completely
- CL5, Missing drop/adaptor plates
- CL6, Closer not securely fastened
- CL7, Closer cover missing/loose
- CL8, Closer fastener(s) stripped, missing or broken
- CL9, Hold-open/incorrect closer arm
- CL10, Closer parallel arm not pre-loaded when installed
- CL11, Closer installed in wrong location

Door Operators

- DO1, Missing door operator
- DO2, Incorrect door operator
- DO3, Does not close door completely
- DO4, Incorrect arm
- DO5, Door operator installed in wrong location
- DO6, Door operator not integrated with access control
- DO7, Door Operator not integrated with fire alarm
- DO8, Missing /defective/incorrect location(s) of actuator buttons

Stops & Holders

- ST1, Kick-down door holder installed
- ST2, Door stop with manual hold-open
- ST3, Door propped open
- ST4, Door stop missing
- ST5, Door stop incorrectly installed
- ST6, Door stop damaged
- ST7, Door stop fasteners stripped, missing or broken
- ST8, Electromagnetic holder not functioning correctly
- ST9, Electromagnetic holder damaged
- ST10, Electromagnetic holder fasteners stripped, missing or broken

Accessories

- TH1, Threshold missing/damaged/installed incorrectly
- TH2, Incorrect threshold
- TH3, Threshold fasteners stripped, missing or broken
- GA1, Gasketing/smoke seal missing/damaged/installed incorrectly
- GA2, Incorrect gasketing/smoke seal installed
- GA3, Gasketing/smoke seal fasteners stripped, missing or broken
- GA4, Door sweep/bottom is missing/damaged
- GA5, Incorrect door sweep/bottom installed
- GA6, Door sweep/bottom fasteners stripped, missing or broken
- GA7, Astragal/meeting stile(s) missing/damaged
- GA8, Incorrect astragal/meeting stile(s)
- GA9, Astragals/meeting stile(s) fasteners stripped, missing or broken
- MI1, Signage too large
- MI2, Signage screwed/nailed to door
- MI3, Door viewer missing/damaged/incorrect
- MI4, Protective material not removed

Electronic Accessories & Controls

- EA1, Missing/defective/incorrect
- EA2, Not connected/commissioned
- EA3, Incorrect system operation

Other

- OT-x, Reference Opening Detail Page

Building: 1

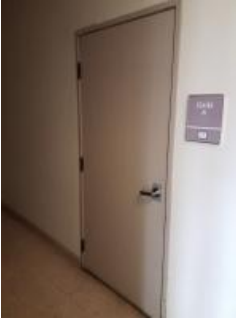
Level: 1

Mark: 1-100B

Room: STAIR 2

Description: 3' 0" x 7' 0" x 1 3/4" WD.F Wood 3 Piece Hollow Metal 90

Secure Side



Hardware Set #: 55.10.71.4SRMWS

Qty	Type	Description	Part Description	Finish	Power	Manufacturer
3	Hinge		Full Mortise - Heavy - 4-1/2"x4-1/2" - 5K - Ball Bearing			
1	Exit Device		Rim - Classroom - Lever			
1	Closer		Surface - Push Side - Parallel			
1	Stop		Wall Stops - Wall Stop			
1	Gasketing		Perimeter Gasketing - Surface			

Non-Secure Side



Hardware Set Notes:

Issue Comments:

Opening Remarks:



O1



Building: 1

Level: 1

Mark: 1-101A

Room: VESTIBULE

Description: 3' 0" x 7' 0" x 1 3/4" AL.FG Aluminum AL.LSL.TR Aluminum

Hardware Set #: 05.13.68.3SCVNS

Secure Side



Qty	Type	Description	Part Description	Finish	Power	Manufacturer
3	Pivot		Pivot - Floor Mount - Offset - 3/4" Offset			
1	Exit Device		Concealed Vertical Rod - Exit Only - Pull - Cylinder Dogging - Electric Dogging			
1	Door Operator		High-Energy - Surface			
1	Gasketing		Perimeter Gasketing - Surface			
1	Electronic Control		Actuator			

Non-Secure Side



Hardware Set Notes:

Issue Comments:

Opening Remarks:



O1



O2



O3



Building: 1

Level: 1

Mark: 1-101B

Room: VESTIBULE

Description: 6' 0" x 7' 0" x 1 3/4" AL.FG Aluminum AL.TR Aluminum

Hardware Set #: 05.10.27.3S

Secure Side



Qty	Type	Description	Part Description	Finish	Power	Manufacturer
6	Pivot		Pivot - Floor Mount - Offset - 3/4" Offset			
2	Exit Device		Concealed Vertical Rod - Exit Only - Pull			
2	Closer		Concealed - Concealed Frame - Offset - Concealed Track Arm			

Hardware Set Notes:

Non-Secure Side



Issue Comments:

Opening Remarks:

Building: 1

Level: 1

Mark: 1-101C

Room: VESTIBULE

Description: 3' 0" x 7' 0" x 1 3/4" AL.FG Aluminum AL.RSL.TR Aluminum

Secure Side


Hardware Set #: 00.10.66.3SCRCVNS

Qty	Type	Description	Part Description	Finish	Power	Manufacturer
1		Power Transfer	Concealed			
3		Pivot	Pivot - Jamb Mount			
1		Exit Device	Concealed Vertical Rod - Exit Only - Pull - Alarmed Exit - Latch Retraction			
1		Closer	Concealed - Concealed Frame			
1		Sweep	Brush			
1		Electronic Control	Card/Wall Reader			

Non-Secure Side


Hardware Set Notes:
Issue Comments:
Opening Remarks:


O1



O2



O3



Building: 1

Level: 1

Mark: 1-102B

Room: VESTIBULE

Description: 6' 0" x 7' 0" x 1 3/4" AL.FG Aluminum AL.TR Aluminum

Hardware Set #: 05.99.27.3S

Secure Side



Qty	Type	Description	Part Description	Finish	Power	Manufacturer
4	Pivot		Pivot - Floor Mount - Offset - 3/4" Offset			
2	Push/Pull		Pull - Pull Bars			
2	Push/Pull		Push - Push Bar			
2	Closer		Concealed - Concealed Frame - Offset - Concealed Track Arm			

Hardware Set Notes:

Non-Secure Side



Issue Comments:

Opening Remarks:



Building: 1

Level: 1

Mark: 1-102C

Room: VESTIBULE

Description: 6' 0" x 7' 0" x 1 3/4" AL.FG Aluminum AL.TR Aluminum

Secure Side



Hardware Set #: 05.99.27.3S

Qty	Type	Description	Part Description	Finish	Power	Manufacturer
4	Pivot		Pivot - Floor Mount - Offset - 3/4" Offset			
2	Push/Pull		Pull - Pull Bars			
2	Push/Pull		Push - Push Bar			
2	Closer		Concealed - Concealed Frame - Offset - Concealed Track Arm			

Hardware Set Notes:

Non-Secure Side



Issue Comments:

Opening Remarks:



O1



O2



Building: 1

Level: 1

Mark: 1-103A

Room: PUBLIC LOBBY

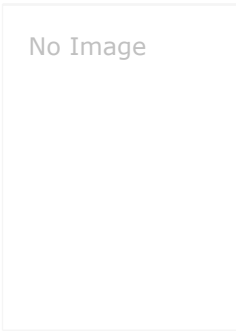
Description: 0' 0" x 0' 0" x 0' 0" 3 Piece Hollow Metal

Secure Side



Hardware Set Notes:

Non-Secure Side



Issue Comments:

Opening Remarks:

Does not exist



Building: 1

Level: 1

Mark: 1-106A

Room: CITY CLERK RECEPTION

Description: 3' 0" x 7' 0" x 1 3/4" WD.F Wood AL.3F Aluminum

Hardware Set #: 55.05.50.4WS Lever

Secure Side



Qty	Type	Description	Part Description	Finish	Power	Manufacturer
4	Hinge		Full Mortise - Heavy - 4-1/2"x4-1/2" - 5K			
1	Lockset		Cylindrical - Non-Electrified - Ent/Off (F109) - Lever			
1	Stop		Wall Stops - Wall Stop			

Hardware Set Notes:

Non-Secure Side



Issue Comments:

Opening Remarks:

Building: 1

Level: 1

Mark: 1-107B

Room: OPEN OFFICE

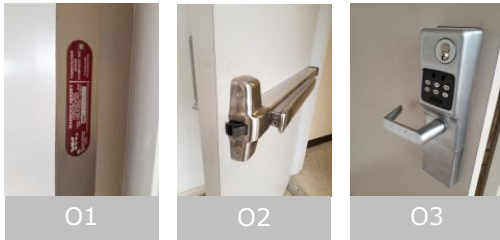
Description: 3' 0" x 7' 0" x 1 3/4" WD.F Wood 3 Piece Hollow Metal

Secure Side


Hardware Set #: 55.10.71.4SRM-1

Qty	Type	Description	Part Description	Finish	Power	Manufacturer
3	Hinge		Full Mortise - Heavy - 4-1/2"x4-1/2" - 5K - Ball Bearing			
1	Exit Device		Rim - Classroom Keypad			
1	Cylinder		Rim - Small Format IC			
1	Closer		Surface - Push Side - Parallel			
1	Gasketing		Perimeter Gasketing - Surface			
1	Peephole Viewer					

Non-Secure Side


Hardware Set Notes:
Issue Comments:
Opening Remarks:


Building: 1

Level: 1

Mark: 1-108A

Room: SGL OCC WOMEN

Description: 3' 0" x 7' 0" x 1 3/4" WD.F Wood 3 Piece Hollow Metal 90

Hardware Set #: 55.05.71.4SNS

Secure Side



Qty	Type	Description	Part Description	Finish	Power	Manufacturer
3	Hinge		Full Mortise - Heavy - 4-1/2"x4-1/2" - 5K - Ball Bearing			
1	Lockset		Cylindrical - Non-Electrified - Ent/Off (F109) - Lever			
1	Closer		Surface - Push Side - Parallel			
1	Gasketing		Perimeter Gasketing - Surface			

Hardware Set Notes:

Non-Secure Side


Issue Comments:
Opening Remarks:


01

Building: 1

Level: 1

Mark: 1-109A

Room: SGL OCC MEN

Description: 3' 0" x 7' 0" x 1 3/4" WD.F Wood 3 Piece Hollow Metal 90

Secure Side


Hardware Set #: 55.05.71.4SNS

Qty	Type	Description	Part Description	Finish	Power	Manufacturer
3	Hinge		Full Mortise - Heavy - 4-1/2"x4-1/2" - 5K - Ball Bearing			
1	Lockset		Cylindrical - Non-Electrified - Ent/Off (F109) - Lever			
1	Closer		Surface - Push Side - Parallel			
1	Gasketing		Perimeter Gasketing - Surface			

Hardware Set Notes:

Non-Secure Side


Issue Comments:
Opening Remarks:


O1

O2

Building: 1

Level: 1

Mark: 1-110A

Room: MECH RM

Description: 2' 8" x 7' 0" x 1 3/4" WD.F Wood 3 Piece Hollow Metal None

Hardware Set #: 55.05.50.4NS-3

Secure Side



Qty	Type	Description	Part Description	Finish	Power	Manufacturer
3	Hinge		Full Mortise - Heavy - 4-1/2"x4-1/2" - 5K			
1	Lockset		Cylindrical - Non-Electrified - Ent/Off (F109) - Knob			

Hardware Set Notes:

Non-Secure Side



Issue Comments:

Opening Remarks:



O1

Building: 1

Level: 1

Mark: 1-111A

Room: KITCHEN / PREP

Description: 5' 0" x 7' 0" x 1 3/4" WD.F Wood 3 Piece Hollow Metal

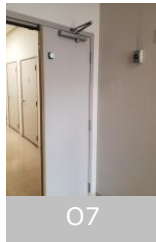
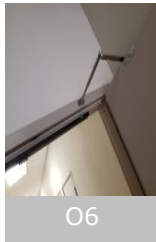
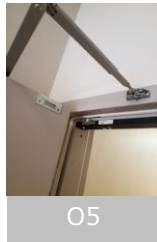
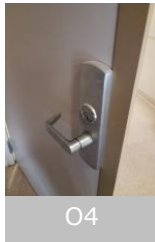
Secure Side



Non-Secure Side


Hardware Set #: 10.13.44.4UHSNS

Qty	Type	Description	Part Description	Finish	Power	Manufacturer
6	Hinge		Full Mortise - Heavy - 4-1/2"x4-1/2" - 5K - Ball Bearing			
1	Exit Device		Surface Vertical Rod - Classroom - Lever - Fire Rated			
1	Coordinator		Soffit Mounted Bar			
2	Closer		Surface - Pull Side - Regular			
1	Gasketing		Perimeter Gasketing - Surface			
1	Astragal		Z-Astragal - Steel - Surface			
1	Electronic Control		Magnetic Hold			

Hardware Set Notes:
Issue Comments:
Opening Remarks:




Building: 1

Level: 1

Mark: 1-111B

Room: CORRIDOR

Description: 6' 0" x 7' 0" x 1 3/4" AL.FG Aluminum AL.TR Aluminum

Secure Side



Non-Secure Side



Hardware Set #: 00.13.27.3SLNS

Qty	Type	Description	Part Description	Finish	Power	Manufacturer
1	Power Transfer		Surface			
4	Pivot		Floor Closer - Center Hung - Hold Open			
1	Lockset		Electromagnetic Lock - Single			
1	Exit Device		Concealed Vertical Rod - Exit Only - Pull			
1	Exit Device		Touch Sense Bar TSB-3			
2	Closer		Concealed - Concealed Frame - Offset - Concealed Track Arm			
1	Electronic Control		Card/Wall Reader			
1	Electronic Control		Magnetic Hold			

Hardware Set Notes:

Issue Comments:

Opening Remarks:



Building: 1

Level: 1

Mark: 1-112A

Room: CORRIDOR

Description: 3' 0" x 7' 0" x 1 3/4" WD.F Wood 3 Piece Hollow Metal 90

Secure Side


Hardware Set #: 55.37.74.4SFS

Qty	Type	Description	Part Description	Finish	Power	Manufacturer
3	Hinge		Full Mortise - Heavy - 4-1/2"x4-1/2" - 5K - Ball Bearing			
1	Lockset		Cylindrical - Non-Electrified - Class (F84) - Lever			
1	Closer		Surface - Pull Side - Regular			
1	Stop		Kickdown Door Stop			
1	Gasketing		Perimeter Gasketing - Surface			

Non-Secure Side


Hardware Set Notes:
Issue Comments:
Opening Remarks:


Building: 1

Level: 1

Mark: 1-115A

Room: OPEN OFFICE

Description: 3' 0" x 7' 0" x 1 3/4" WD.F Wood 3 Piece Hollow Metal

Hardware Set #: 55.05.74.4SWS

Secure Side



Qty	Type	Description	Part Description	Finish	Power	Manufacturer
3	Hinge		Full Mortise - Heavy - 4-1/2"x4-1/2" - 5K - Ball Bearing			
1	Lockset		Cylindrical - Non-Electrified - Ent/Off (F109) - Lever			
1	Closer		Surface - Pull Side - Regular			
1	Stop		Wall Stops - Wall Stop			
1	Stop		Kickdown Door Stop			
1	Gasketing		Perimeter Gasketing - Surface			

Non-Secure Side


Hardware Set Notes:
Issue Comments:
Opening Remarks:


O1

O2

Building: 1

Level: 1

Mark: 1-116A

Room: KEY PRESENTER / STAGING ROOM

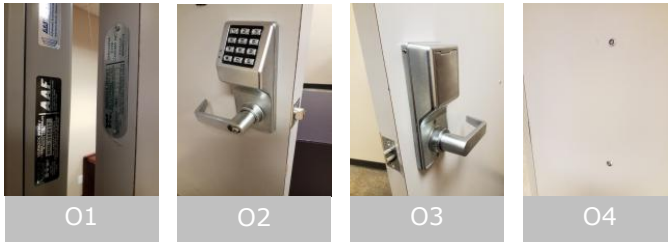
Description: 3' 6" x 7' 0" x 1 3/4" WD.F Wood 3 Piece Hollow Metal 20

Secure Side


Hardware Set #: 55.37.74.4SNS

Qty	Type	Description	Part Description	Finish	Power	Manufacturer
3	Hinge		Full Mortise - Heavy - 4-1/2"x4-1/2" - 5K - Ball Bearing			
1	Lockset		Cylindrical - Electrified - Fail Secure - Lever			
1	Cylinder		Rim - Small Format IC			
1	Closer		Surface - Pull Side - Regular			
1	Gasketing		Perimeter Gasketing - Surface			
2	Peephole Viewer					

Non-Secure Side


Hardware Set Notes:
Issue Comments:
Opening Remarks:




Building: 1

Level: 1

Mark: 1-118A

Room: STOR

Description: 3' 0" x 7' 0" x 1 3/4" WD.F Wood AL.3F Aluminum 20

Hardware Set #: 55.37.71.4SNS-1

Secure Side



Qty	Type	Description	Part Description	Finish	Power	Manufacturer
3	Hinge		Full Mortise - Heavy - 4-1/2"x4-1/2" - 5K			
1	Lockset		Cylindrical - Non-Electrified - Class (F84) - Lever			
1	Closer		Surface - Push Side - Parallel			
1	Gasketing		Perimeter Gasketing - Surface			

Hardware Set Notes:

Non-Secure Side



Issue Comments:

Opening Remarks:

Building: 1

Level: 1

Mark: 1-120B

Room: ANTE ROOM

Description: 3' 0" x 7' 0" x 1 3/4" AL.FG Aluminum AL.RSL.TR Aluminum

Secure Side


Hardware Set #: 00.10.66.3SCRCVNS

Qty	Type	Description	Part Description	Finish	Power	Manufacturer
1		Power Transfer	Concealed			
3		Pivot	Pivot - Jamb Mount			
1		Exit Device	Concealed Vertical Rod - Exit Only - Pull - Alarmed Exit - Latch Retraction			
1		Closer	Concealed - Concealed Frame			
1		Sweep	Brush			
1		Electronic Control	Card/Wall Reader			

Non-Secure Side


Hardware Set Notes:
Issue Comments:
Opening Remarks:


01



02



03



04



05



Building: 1

Level: 1

Mark: 1-130A

Room: ELECT. ROOM

Description: 2' 8" x 7' 0" x 1 3/4" WD.F Wood 3 Piece Hollow Metal 20

Issue Codes: **D2, F9**

Secure Side



Hardware Set #: 55.04.71.4EGNS

Qty	Type	Description	Part Description	Finish	Power	Manufacturer
3	Hinge		Full Mortise - Heavy - 4-1/2"x4-1/2" - 5K			
1	Lockset		Cylindrical - Non-Electrified - Store (F86) - Knob			
1	Closer		Surface - Push Side - Parallel Issue Code: CL3			
1	Plate		Guards - Latch Protectors			

Non-Secure Side



Hardware Set Notes:

Issue Comments:

Opening Remarks:

CL3: Missing/damaged/broken arm
Comments: disconnected
Issue Status: Non-Compliant

D2: Door damaged (bent, dented, delaminating)
Issue Status: Non-Compliant

F9: Improper field modification or repair
Issue Status: Non-Compliant



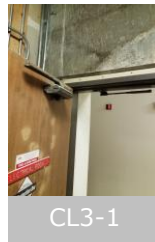
01



02



F9-1



CL3-1



D2-1

Building: 1

Level: 1

Mark: 1-131A

Room: STOR.

Description: 3' 0" x 7' 0" x 1 3/4" WD.F Wood 3 Piece Hollow Metal 90

Secure Side


Hardware Set #: 55.37.71.4SNS-1

Qty	Type	Description	Part Description	Finish	Power	Manufacturer
3	Hinge		Full Mortise - Heavy - 4-1/2"x4-1/2" - 5K			
1	Lockset		Cylindrical - Non-Electrified - Class (F84) - Lever			
1	Closer		Surface - Push Side - Parallel Issue Code: CL3			
1	Gasketing		Perimeter Gasketing - Surface			

Hardware Set Notes:

Non-Secure Side


Issue Comments:

 CL3: Missing/damaged/broken arm
 Issue Status: Non-Compliant

Opening Remarks:


O1



O2



CL3-1



Building: 1

Level: 1

Mark: 1-132A

Room: HALLWAY

Description: 6' 0" x 7' 0" x 1 3/4" AL.FG Aluminum AL.3F Aluminum

Hardware Set #: 05.11.27.3SCVNS

Secure Side



Qty	Type	Description	Part Description	Finish	Power	Manufacturer
4	Pivot		Pivot - Floor Mount - Center Hung			
2	Exit Device		Concealed Vertical Rod - Exit Only - Pull			
2	Closer		Surface - Push Side - Track			

Hardware Set Notes:

Non-Secure Side



Issue Comments:

Opening Remarks:



01

Building: 1

Level: 1

Mark: 1-132B

Room: HALLWAY

Description: 3' 0" x 7' 0" x 1 3/4" WD.F Wood AL.3F Aluminum

Hardware Set #: 55.05.50.4WS Lever

Secure Side



Qty	Type	Description	Part Description	Finish	Power	Manufacturer
4	Hinge		Full Mortise - Heavy - 4-1/2"x4-1/2" - 5K			
1	Lockset		Cylindrical - Non-Electrified - Ent/Off (F109) - Lever Issue Code: LO1			
1	Stop		Wall Stops - Wall Stop			

Hardware Set Notes:

Non-Secure Side



Issue Comments:

LO1: Lock missing/damaged/not securely fastened
Issue Status: Non-Compliant

Opening Remarks:



LO1-1

Building: 1

Level: 1

Mark: 1-132C

Room: HALLWAY

Description: 3' 0" x 7' 0" x 1 3/4" AL.FG Aluminum AL.LSL.TR Aluminum

Secure Side



Hardware Set #: 05.03.67.3SNS

Qty	Type	Description	Part Description	Finish	Power	Manufacturer
1	Pivot		Pivot - Floor Mount - Offset - 3/4" Offset			
1	Lockset		Deadbolt - Mortise			
1	Push/Pull		Pull - Pull Bars			
1	Push/Pull		Push - Push Bar			
1	Closer		Concealed - Concealed Frame - Offset - Concealed Track Arm			
1	Gasketing		Perimeter Gasketing - Surface			

Non-Secure Side



Hardware Set Notes:

Issue Comments:

Opening Remarks:



Building: 1

Level: 1

Mark: 1-133A

Room: VESTIBULE

Description: 3' 0" x 7' 0" x 1 3/4" AL.FG Aluminum AL.RSL.TR Aluminum

Secure Side


Hardware Set #: 00.10.6.3HSLNS

Qty	Type	Description	Part Description	Finish	Power	Manufacturer
1	Power Transfer		Surface			
1	Pivot		Floor Closer - Center Hung - Hold Open			
1	Lockset		Electromagnetic Lock - Single			
1	Exit Device		Touch Sense Bar TSB-3			
1	Sweep		Silicone			
1	Electronic Control		Keypad			

Non-Secure Side


Hardware Set Notes:
Issue Comments:
Opening Remarks:


01



02



03



04



05



Building: 1

Level: 1

Mark: 1-134A

Room: CHANNEL 97 STORAGE

Description: 4' 0" x 8' 0" x 1 3/4" WD.F Wood AL.3F Aluminum None

Hardware Set #: 55.37.50.4SNS

Secure Side



Qty	Type	Description	Part Description	Finish	Power	Manufacturer
4	Hinge		Full Mortise - Heavy - 4-1/2"x4-1/2" - 5K			
1	Lockset		Cylindrical - Non-Electrified - Class (F84) - Lever			
1	Gasketing		Perimeter Gasketing - Surface			

Hardware Set Notes:

Non-Secure Side



Issue Comments:

Opening Remarks:



Building: 1

Level: 1

Mark: 1-137A

Room: LIBRARY / MAP ROOM

Description: 3' 0" x 7' 0" x 1 3/4" WD.FG Wood AL.RSL Aluminum

Hardware Set #: 55.95.50.4WS

Secure Side



Qty	Type	Description	Part Description	Finish	Power	Manufacturer
3	Hinge		Full Mortise - Heavy - 4-1/2"x4-1/2" - 5K			
1	Lockset		Cylindrical - Non-Electrified - Passage (F75) - Lever			
1	Stop		Wall Stops - Wall Stop			
1	Gasketing		Perimeter Gasketing - Surface			

Hardware Set Notes:

Non-Secure Side



Issue Comments:

Opening Remarks:



Building: 1

Level: 1

Mark: 1-139A

Room: CONF. ROOM

Description: 3' 0" x 7' 0" x 1 3/4" WD.F Wood AL.3F Aluminum

Issue Codes: **D2**

Secure Side



Hardware Set #: 55.95.50.4NS

Qty	Type	Description	Part Description	Finish	Power	Manufacturer
3	Hinge		Full Mortise - Heavy - 4-1/2"x4-1/2" - 5K			
1	Lockset		Cylindrical - Non-Electrified - Passage (F75) - Lever			

Hardware Set Notes:

Non-Secure Side



Issue Comments:

D2: Door damaged (bent, dented, delaminating)
Issue Status: Non-Compliant

Opening Remarks:



D2-1

Building: 1

Level: 2

Mark: 1-200A

Room: STAIR 1

Description: 3' 0" x 7' 0" x 1 3/4" WD.F Wood 3 Piece Hollow Metal 90

Issue Codes: **D2, F9**

Secure Side


Hardware Set #: 55.10.71.4SRMWS

Qty	Type Description	Part Description	Finish	Power	Manufacturer
3	Hinge	Full Mortise - Heavy - 4-1/2"x4-1/2" - 5K - Ball Bearing			
1	Exit Device	Rim - Classroom - Lever			
1	Closer	Surface - Push Side - Parallel			
1	Stop	Wall Stops - Wall Stop			
1	Gasketing	Perimeter Gasketing - Surface			

Non-Secure Side


Hardware Set Notes:
Issue Comments:

 D2: Door damaged (bent, dented, delaminating)
 Issue Status: Non-Compliant

 F9: Improper field modification or repair
 Issue Status: Non-Compliant

Opening Remarks:


O1



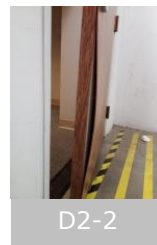
O2



F9-1



D2-1



D2-2

Building: 1

Level: 2

Mark: 1-200B

Room: STAIR 2

Description: 3' 0" x 7' 0" x 1 3/4" WD.F Wood 3 Piece Hollow Metal 90

Secure Side


Hardware Set #: 55.10.71.4SRMWS

Qty	Type	Description	Part Description	Finish	Power	Manufacturer
3	Hinge		Full Mortise - Heavy - 4-1/2"x4-1/2" - 5K - Ball Bearing			
1	Exit Device		Rim - Classroom - Lever			
1	Closer		Surface - Push Side - Parallel			
1	Stop		Wall Stops - Wall Stop			
1	Gasketing		Perimeter Gasketing - Surface			

Non-Secure Side


Hardware Set Notes:
Issue Comments:
Opening Remarks:


O1



O2



Building: 1

Level: 2

Mark: 1-204A

Room: MEN'S

Description: 3' 0" x 7' 0" x 1 3/4" WD.F Wood AL.3F Aluminum 20

Hardware Set #: 55.37.71.4SNS

Secure Side



Qty	Type	Description	Part Description	Finish	Power	Manufacturer
3	Hinge		Full Mortise - Heavy - 4-1/2"x4-1/2" - 5K - Ball Bearing			
1	Lockset		Cylindrical - Non-Electrified - Class (F84) - Lever			
1	Closer		Surface - Push Side - Parallel			
1	Gasketing		Perimeter Gasketing - Surface			

Hardware Set Notes:

Non-Secure Side



Issue Comments:

Opening Remarks:

Building: 1

Level: 2

Mark: 1-205A

Room: ELECT. ROOM

Description: 2' 8" x 7' 0" x 1 3/4" WD.F Wood 3 Piece Hollow Metal 20

Issue Codes: **F9**

Secure Side


Hardware Set #: 55.04.71.4NS

Qty	Type	Description	Part Description	Finish	Power	Manufacturer
3	Hinge		Full Mortise - Heavy - 4-1/2"x4-1/2" - 5K			
1	Lockset		Cylindrical - Non-Electrified - Store (F86) - Knob			
1	Closer		Surface - Push Side - Parallel			

Hardware Set Notes:

Non-Secure Side


Issue Comments:

 F9: Improper field modification or repair
 Issue Status: Non-Compliant

Opening Remarks:


O1



O2



F9-1

Building: 1

Level: 2

Mark: 1-206A

Room: WOMEN'S

Description: 3' 0" x 7' 0" x 1 3/4" WD.F Wood AL.3F Aluminum None

Secure Side


Hardware Set #: 55.37.71.4SNS

Qty	Type	Description	Part Description	Finish	Power	Manufacturer
3	Hinge		Full Mortise - Heavy - 4-1/2"x4-1/2" - 5K - Ball Bearing			
1	Lockset		Cylindrical - Non-Electrified - Class (F84) - Lever			
1	Closer		Surface - Push Side - Parallel			
1	Gasketing		Perimeter Gasketing - Surface			

Hardware Set Notes:

Non-Secure Side


Issue Comments:
Opening Remarks:


O1



Building: 1

Level: 2

Mark: 1-207A

Room: JANITOR

Description: 3' 0" x 7' 0" x 1 3/4" WD.F Wood AL.3F Aluminum

Hardware Set #: 55.37.50.4SWS

Secure Side



Qty	Type	Description	Part Description	Finish	Power	Manufacturer
3	Hinge		Full Mortise - Heavy - 4-1/2"x4-1/2" - 5K			
1	Lockset		Cylindrical - Non-Electrified - Class (F84) - Lever			
1	Stop		Wall Stops - Wall Stop			
1	Gasketing		Perimeter Gasketing - Surface			

Hardware Set Notes:

Non-Secure Side



Issue Comments:

Opening Remarks:



Building: 1

Level: 2

Mark: 1-208A

Room: CONFERENCE ROOM

Description: 3' 0" x 7' 0" x 1 3/4" WD.N Wood AL.3F Aluminum 20

Hardware Set #: 55.37.71.4SWS-2

Secure Side



Qty	Type	Description	Part Description	Finish	Power	Manufacturer
4	Hinge		Full Mortise - Heavy - 4-1/2"x4-1/2" - 5K			
1	Lockset		Cylindrical - Electrified - Fail Secure - Lever			
1	Closer		Surface - Push Side - Parallel			
1	Stop		Wall Stops - Wall Stop			

Hardware Set Notes:

Non-Secure Side



Issue Comments:

Opening Remarks:



O1



O2



O3



O4



Building: 1

Level: 2

Mark: 1-209A

Room: CONF. ROOM

Description: 3' 0" x 7' 0" x 1 3/4" WD.F Wood 3 Piece Hollow Metal 20

Hardware Set #: 55.05.71.4SWS

Secure Side



Qty	Type	Description	Part Description	Finish	Power	Manufacturer
3	Hinge		Full Mortise - Heavy - 4-1/2"x4-1/2" - 5K - Ball Bearing			
1	Lockset		Cylindrical - Non-Electrified - Ent/Off (F109) - Lever			
1	Closer		Surface - Pull Side - Regular			

Hardware Set Notes:

Non-Secure Side



Issue Comments:

Opening Remarks:

Building: 1

Level: 2

Mark: 1-210A

Room: OPEN OFFICE

Description: 6' 0" x 7' 8" x 1 3/4" WD.F Wood 3 Piece Hollow Metal 20

Secure Side



Non-Secure Side


Hardware Set #: 55.05.49.3HSCNS

Qty	Type	Description	Part Description	Finish	Power	Manufacturer
8	Pivot		Pivot - Intermediate			
1	Bolt		Concealed - Automatic			
1	Lockset		Cylindrical - Non-Electrified - Ent/Off (F109) - Lever			
1	Coordinator		Soffit Mounted Bar			
2	Closer		Surface - Push Side - Track			
1	Gasketing		Perimeter Gasketing - Surface			
1	Astragal		T-Astragal - Aluminium			
1	Electronic Control		Magnetic Hold			

Hardware Set Notes:
Issue Comments:
Opening Remarks:


01



02



03



04



05



Building: 1

Level: 2

Mark: 1-212A

Room: OPEN OFFICE

Description: 3' 0" x 7' 0" x 1 3/4" WD.FG Wood AL.RSL.TR Aluminum

Hardware Set #: 55.95.50.4WS

Secure Side



Qty	Type	Description	Part Description	Finish	Power	Manufacturer
3	Hinge		Full Mortise - Heavy - 4-1/2"x4-1/2" - 5K			
1	Lockset		Cylindrical - Non-Electrified - Passage (F75) - Lever			
1	Stop		Wall Stops - Wall Stop			
1	Gasketing		Perimeter Gasketing - Surface			

Hardware Set Notes:

Non-Secure Side



Issue Comments:

Opening Remarks:

Building: 1

Level: 2

Mark: 1-213A

Room: CONFERENCE ROOM

Description: 3' 0" x 7' 0" x 1 3/4" WD.FG Wood AL.3F Aluminum

Hardware Set #: 55.05.50.4WS Lever

Secure Side



Qty	Type	Description	Part Description	Finish	Power	Manufacturer
4	Hinge		Full Mortise - Heavy - 4-1/2"x4-1/2" - 5K			
1	Lockset		Cylindrical - Non-Electrified - Ent/Off (F109) - Lever			
1	Stop		Wall Stops - Wall Stop			

Hardware Set Notes:

Non-Secure Side


Issue Comments:
Opening Remarks:



Building: 1

Level: 2

Mark: 1-214A

Room: OFFICE

Description: 3' 0" x 7' 0" x 1 3/4" WD.FG Wood AL.3F Aluminum

Secure Side



Hardware Set #: 55.95.50.4WS

Qty	Type	Description	Part Description	Finish	Power	Manufacturer
3	Hinge		Full Mortise - Heavy - 4-1/2"x4-1/2" - 5K			
1	Lockset		Cylindrical - Non-Electrified - Passage (F75) - Lever			
1	Stop		Wall Stops - Wall Stop			
1	Gasketing		Perimeter Gasketing - Surface			

Hardware Set Notes:

Non-Secure Side



Issue Comments:

Opening Remarks:



Building: 1

Level: 2

Mark: 1-215A

Room: OFFICE

Description: 3' 0" x 7' 0" x 1 3/4" WD.FG Wood AL.3F Aluminum

Hardware Set #: 55.05.50.4WS Lever

Secure Side



Qty	Type	Description	Part Description	Finish	Power	Manufacturer
4	Hinge		Full Mortise - Heavy - 4-1/2"x4-1/2" - 5K			
1	Lockset		Cylindrical - Non-Electrified - Ent/Off (F109) - Lever			
1	Stop		Wall Stops - Wall Stop			

Hardware Set Notes:

Non-Secure Side



Issue Comments:

Opening Remarks:



Building: 1

Level: 2

Mark: 1-216A

Room: OFFICE

Description: 3' 0" x 7' 0" x 1 3/4" WD.FG Wood AL.3F Aluminum

Hardware Set #: 55.95.50.4WS

Secure Side



Qty	Type	Description	Part Description	Finish	Power	Manufacturer
3	Hinge		Full Mortise - Heavy - 4-1/2"x4-1/2" - 5K			
1	Lockset		Cylindrical - Non-Electrified - Passage (F75) - Lever			
1	Stop		Wall Stops - Wall Stop			
1	Gasketing		Perimeter Gasketing - Surface			

Hardware Set Notes:

Non-Secure Side



Issue Comments:

Opening Remarks:



Building: 1

Level: 2

Mark: 1-217A

Room: OFFICE

Description: 3' 0" x 7' 0" x 1 3/4" WD.FG Wood AL.LSL Aluminum

Hardware Set #: 55.05.50.4WS Lever

Secure Side



Qty	Type	Description	Part Description	Finish	Power	Manufacturer
4	Hinge		Full Mortise - Heavy - 4-1/2"x4-1/2" - 5K			
1	Lockset		Cylindrical - Non-Electrified - Ent/Off (F109) - Lever			
1	Stop		Wall Stops - Wall Stop			

Hardware Set Notes:

Non-Secure Side



Issue Comments:

Opening Remarks:



Building: 1

Level: 2

Mark: 1-219A

Room: OFFICE

Description: 3' 0" x 7' 0" x 1 3/4" WD.F Wood AL.3F Aluminum

Hardware Set #: 55.05.50.4WS Lever

Secure Side



Qty	Type	Description	Part Description	Finish	Power	Manufacturer
4	Hinge		Full Mortise - Heavy - 4-1/2"x4-1/2" - 5K			
1	Lockset		Cylindrical - Non-Electrified - Ent/Off (F109) - Lever			
1	Stop		Wall Stops - Wall Stop			

Hardware Set Notes:

Non-Secure Side



Issue Comments:

Opening Remarks:



Building: 1

Level: 2

Mark: 1-221A

Room: OFFICE

Description: 3' 0" x 7' 0" x 1 3/4" WD.F Wood AL.3F Aluminum

Secure Side



Hardware Set #: 55.95.50.4WS

Qty	Type	Description	Part Description	Finish	Power	Manufacturer
3	Hinge		Full Mortise - Heavy - 4-1/2"x4-1/2" - 5K			
1	Lockset		Cylindrical - Non-Electrified - Passage (F75) - Lever			
1	Stop		Wall Stops - Wall Stop			
1	Gasketing		Perimeter Gasketing - Surface			

Hardware Set Notes:

Non-Secure Side



Issue Comments:

Opening Remarks:



Building: 1

Level: 2

Mark: 1-224A

Room: CIRC.

Description: 3' 6" x 7' 0" x 1 3/4" WD.FG Wood AL.RSL Aluminum

Hardware Set #: 55.95.50.4WS

Secure Side



Qty	Type	Description	Part Description	Finish	Power	Manufacturer
3	Hinge		Full Mortise - Heavy - 4-1/2"x4-1/2" - 5K			
1	Lockset		Cylindrical - Non-Electrified - Passage (F75) - Lever			
1	Stop		Wall Stops - Wall Stop			
1	Gasketing		Perimeter Gasketing - Surface			

Hardware Set Notes:

Non-Secure Side



Issue Comments:

Opening Remarks:

Building: 1

Level: 2

Mark: 1-225A

Room: SECURE FILE ROOM

Description: 3' 6" x 7' 0" x 1 3/4" WD.F Wood AL.3F Aluminum 20

Secure Side


Hardware Set #: 55.96.71.4SDS

Qty	Type	Description	Part Description	Finish	Power	Manufacturer
3	Hinge		Full Mortise - Heavy - 4-1/2"x4-1/2" - 5K - Ball Bearing			
1	Lockset		Deadbolt - Cylindrical - Double Cylinder			
1	Push/Pull		Pull - Pull Bars			
1	Closer		Surface - Push Side - Parallel			
1	Plate		Guards - Latch Protectors			
1	Stop		Wall Stops - Door Stop			
1	Gasketing		Perimeter Gasketing - Surface			

Non-Secure Side


Hardware Set Notes:
Issue Comments:
Opening Remarks:


O1



O2



O3



Building: 1

Level: 2

Mark: 1-226A

Room: CITY CLERK RECORD STORAGE

Description: 3' 6" x 7' 0" x 1 3/4" WD.V Wood AL.3F Aluminum None

Hardware Set #: 55.37.71.4SCRNS

Secure Side



Qty	Type	Description	Part Description	Finish	Power	Manufacturer
3	Hinge		Full Mortise - Heavy - 4-1/2"x4-1/2" - 5K - Ball Bearing			
1	Lockset		Cylindrical - Non-Electrified - Class (F84) - Lever			
1	Closer		Surface - Push Side - Parallel			
1	Gasketing		Perimeter Gasketing - Surface			
1	Electronic Control		Card/Wall Reader			

Non-Secure Side



Hardware Set Notes:

Issue Comments:

Opening Remarks:

Building: 1

Level: 2

Mark: 1-230A

Room: CORRIDOR

Description: 3' 0" x 7' 0" x 1 3/4" WD.F Wood AL.3F Aluminum 20

Secure Side


Hardware Set #: 55.37.71.4SFS

Qty	Type	Description	Part Description	Finish	Power	Manufacturer
3	Hinge		Full Mortise - Heavy - 4-1/2"x4-1/2" - 5K			
1	Lockset		Cylindrical - Electrified - Fail Secure - Lever			
1	Cylinder		Rim - Small Format IC			
1	Closer		Surface - Push Side - Parallel			
1	Stop		Wall Stops - Floor Stop			
2	Peephole Viewer					

Non-Secure Side


Hardware Set Notes:
Issue Comments:
Opening Remarks:


01



02



03



04



05

Building: 1

Level: 2

Mark: 1-232A

Room: OFFICE

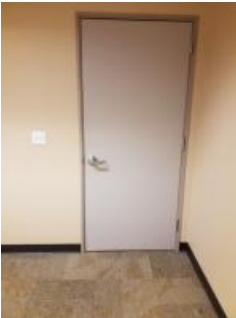
Description: 3' 0" x 7' 0" x 1 3/4" WD.F Wood AL.3F Aluminum None

Secure Side


Hardware Set #: 55.05.50.4FS.IC

Qty	Type	Description	Part Description	Finish	Power	Manufacturer
3	Hinge		Full Mortise - Heavy - 4-1/2"x4-1/2" - 5K			
1	Lockset		Cylindrical - Non-Electrified - Ent/Off (F109) - Lever			
1	Cylinder		Rim - Small Format IC			
1	Stop		Wall Stops - Floor Stop			
1	Gasketing		Perimeter Gasketing - Surface			

Non-Secure Side


Hardware Set Notes:
Issue Comments:
Opening Remarks:


O1



O2



O3



Building: 1

Level: 2

Mark: 1-241A

Room: STOR.

Description: 3' 0" x 7' 0" x 1 3/4" WD.F Wood 3 Piece Hollow Metal 90

Hardware Set #: 55.04.74.4SWS

Secure Side



Qty	Type	Description	Part Description	Finish	Power	Manufacturer
3	Hinge		Full Mortise - Heavy - 4-1/2"x4-1/2" - 5K - Ball Bearing			
1	Lockset		Cylindrical - Non-Electrified - Store (F86) - Lever			
1	Closer		Surface - Pull Side - Regular			
1	Stop		Wall Stops - Wall Stop			

Hardware Set Notes:

Non-Secure Side



Issue Comments:

Opening Remarks:



O1

Building: 1

Level: 3

Mark: 1-300A

Room: STAIR 1

Description: 3' 0" x 7' 0" x 1 3/4" WD.F Wood 3 Piece Hollow Metal 90

Secure Side


Hardware Set #: 55.10.71.4SRMWS

Qty	Type	Description	Part Description	Finish	Power	Manufacturer
3	Hinge		Full Mortise - Heavy - 4-1/2"x4-1/2" - 5K - Ball Bearing			
1	Exit Device		Rim - Classroom - Lever			
1	Closer		Surface - Push Side - Parallel			
1	Stop		Wall Stops - Wall Stop			
1	Gasketing		Perimeter Gasketing - Surface			

Non-Secure Side


Hardware Set Notes:
Issue Comments:
Opening Remarks:


01



02

Building: 1

Level: 3

Mark: 1-300B

Room: STAIR 2

Description: 3' 0" x 7' 0" x 1 3/4" WD.F Wood 3 Piece Hollow Metal 90

Secure Side


Hardware Set #: 55.10.71.4SRMWS

Qty	Type	Description	Part Description	Finish	Power	Manufacturer
3	Hinge		Full Mortise - Heavy - 4-1/2"x4-1/2" - 5K - Ball Bearing			
1	Exit Device		Rim - Classroom - Lever			
1	Closer		Surface - Push Side - Parallel			
1	Stop		Wall Stops - Wall Stop			
1	Gasketing		Perimeter Gasketing - Surface			

Non-Secure Side


Hardware Set Notes:
Issue Comments:
Opening Remarks:




Building: 1

Level: 3

Mark: 1-304A

Room: MEN'S

Description: 3' 0" x 7' 0" x 1 3/4" WD.F Wood 3 Piece Hollow Metal

Secure Side



Hardware Set #: 55.95.61.4SNS

Qty	Type	Description	Part Description	Finish	Power	Manufacturer
4	Hinge		Full Mortise - Heavy - 4-1/2"x4-1/2" - 5K			
1	Lockset		Cylindrical - Non-Electrified - Passage (F75) - Lever			
1	Closer		Surface - Push Side - Parallel			
1	Gasketing		Perimeter Gasketing - Surface			

Hardware Set Notes:

Non-Secure Side



Issue Comments:

Opening Remarks:



Building: 1

Level: 3

Mark: 1-305A

Room: ELECT. ROOM

Description: 2' 8" x 7' 0" x 1 3/4" WD.F Wood 3 Piece Hollow Metal 90

Secure Side

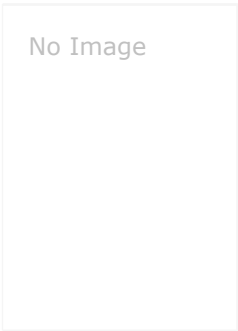


Hardware Set #: 55.04.71.4NS

Qty	Type	Description	Part Description	Finish	Power	Manufacturer
3	Hinge		Full Mortise - Heavy - 4-1/2"x4-1/2" - 5K			
1	Lockset		Cylindrical - Non-Electrified - Store (F86) - Knob			
1	Closer		Surface - Push Side - Parallel			

Hardware Set Notes:

Non-Secure Side



Issue Comments:

Opening Remarks:



Building: 1

Level: 3

Mark: 1-306A

Room: WOMEN'S

Description: 3' 0" x 7' 0" x 1 3/4" WD.F Wood 3 Piece Hollow Metal

Hardware Set #: 55.95.61.4KP.NS

Secure Side



Qty	Type	Description	Part Description	Finish	Power	Manufacturer
3	Hinge		Full Mortise - Heavy - 4-1/2"x4-1/2" - 5K			
1	Lockset		Cylindrical - Non-Electrified - Passage (F75) - Lever			
1	Closer		Surface - Push Side - Parallel			
1	Plate		Plates - Kick Plate			

Hardware Set Notes:

Non-Secure Side



Issue Comments:

Opening Remarks:

Building: 1

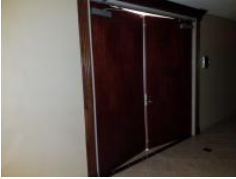
Level: 3

Mark: 1-308A

Room: TRAINING ROOM

Description: 8' 0" x 7' 11 1/2" x 1 3/4" WD.F Wood AL.3F Aluminum 20

Secure Side


Hardware Set #: 55.37.45.4HSCMONS

Qty	Type	Description	Part Description	Finish	Power	Manufacturer
8	Hinge		Full Mortise - Heavy - 4-1/2"x4-1/2" - 5K - Ball Bearing			
1	Bolt		Concealed - Automatic			
1	Lockset		Mortise - Non-Electrified - Ent/Off (F04) - Lever - Deadbolt			
1	Coordinator		Soffit Mounted Bar			
2	Closer		Surface - Push Side - Parallel			
1	Astragal		T-Astragal - Aluminium			
2	Electronic Control		Magnetic Hold			

Non-Secure Side


Hardware Set Notes:
Issue Comments:
Opening Remarks:


01



02



03



04



05



06



07



Building: 1

Level: 3

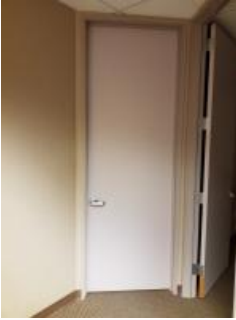
Mark: 1-311A

Room: OFFICE

Description: 3' 0" x 8' 10" x 1 3/4" WD.F Wood AL.3F Aluminum

Hardware Set #: 55.95.50.4WS

Secure Side



Qty	Type	Description	Part Description	Finish	Power	Manufacturer
3	Hinge		Full Mortise - Heavy - 4-1/2"x4-1/2" - 5K			
1	Lockset		Cylindrical - Non-Electrified - Passage (F75) - Lever			
1	Stop		Wall Stops - Wall Stop			
1	Gasketing		Perimeter Gasketing - Surface			

Hardware Set Notes:

Non-Secure Side



Issue Comments:

Opening Remarks:

Building: 1

Level: 3

Mark: 1-312a

Room: OFFICE

Description: 3' 0" x 8' 10" x 1 3/4" WD.F Wood AL.3F Aluminum

Secure Side



Hardware Set #: 55.05.50.4WS Lever

Qty	Type	Description	Part Description	Finish	Power	Manufacturer
4	Hinge		Full Mortise - Heavy - 4-1/2"x4-1/2" - 5K			
1	Lockset		Cylindrical - Non-Electrified - Ent/Off (F109) - Lever			
1	Stop		Wall Stops - Wall Stop			

Hardware Set Notes:

Non-Secure Side



Issue Comments:

Opening Remarks:



O1



Building: 1

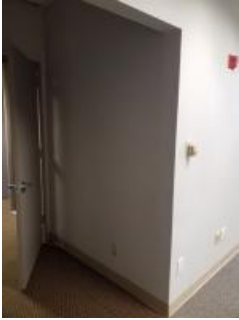
Level: 3

Mark: 1-315A

Room: OFFICE

Description: 0' 0" x 0' 0" x 0' 0" 3 Piece Hollow Metal

Secure Side



Hardware Set Notes:

Non-Secure Side



Issue Comments:

Opening Remarks:



Building: 1

Level: 3

Mark: 1-320A

Room: CLOSET

Description: 6' 0" x 7' 0" x 1 3/4" WD.F Wood None None

Secure Side



Hardware Set #: Bifold

Qty **Type** **Description**

1 Push/Pull

Part Description

Pull - Pull Bars

Finish

Power

Manufacturer

Hardware Set Notes:

Non-Secure Side



Issue Comments:

Opening Remarks:



Building: 1

Level: 3

Mark: 1-321B

Room: IT BREAKROOM

Description: 3' 0" x 7' 0" x 1 3/4" WD.F Wood AL.3F Aluminum

Secure Side



Hardware Set #: 55.95.50.4NS

Qty	Type	Description	Part Description	Finish	Power	Manufacturer
3	Hinge		Full Mortise - Heavy - 4-1/2"x4-1/2" - 5K			
1	Lockset		Cylindrical - Non-Electrified - Passage (F75) - Lever			

Hardware Set Notes:

Non-Secure Side



Issue Comments:

Opening Remarks:



Building: 1

Level: 3

Mark: 1-323A

Room: OFFICE

Description: 3' 0" x 7' 0" x 1 3/4" WD.F Wood AL.LSL Aluminum

Secure Side



Hardware Set #: 55.95.50.4WS

Qty	Type	Description	Part Description	Finish	Power	Manufacturer
3	Hinge		Full Mortise - Heavy - 4-1/2"x4-1/2" - 5K			
1	Lockset		Cylindrical - Non-Electrified - Passage (F75) - Lever			
1	Stop		Wall Stops - Wall Stop			
1	Gasketing		Perimeter Gasketing - Surface			

Hardware Set Notes:

Non-Secure Side



Issue Comments:

Opening Remarks:



Building: 1

Level: 3

Mark: 1-324A

Room: OFFICE

Description: 3' 0" x 7' 0" x 1 3/4" WD.F Wood AL.RSL Aluminum

Secure Side



Hardware Set #: 55.95.50.4WS

Qty	Type	Description	Part Description	Finish	Power	Manufacturer
3	Hinge		Full Mortise - Heavy - 4-1/2"x4-1/2" - 5K			
1	Lockset		Cylindrical - Non-Electrified - Passage (F75) - Lever			
1	Stop		Wall Stops - Wall Stop			
1	Gasketing		Perimeter Gasketing - Surface			

Hardware Set Notes:

Non-Secure Side



Issue Comments:

Opening Remarks:



Building: 1

Level: 3

Mark: 1-325A

Room: OFFICE

Description: 3' 0" x 7' 0" x 1 3/4" WD.F Wood AL.RSL Aluminum

Hardware Set #: 55.95.50.4WS

Secure Side



Qty	Type	Description	Part Description	Finish	Power	Manufacturer
3	Hinge		Full Mortise - Heavy - 4-1/2"x4-1/2" - 5K			
1	Lockset		Cylindrical - Non-Electrified - Passage (F75) - Lever			
1	Stop		Wall Stops - Wall Stop			
1	Gasketing		Perimeter Gasketing - Surface			

Hardware Set Notes:

Non-Secure Side



Issue Comments:

Opening Remarks:



Building: 1

Level: 3

Mark: 1-326A

Room: COPY AREA / INTERNS

Description: 6' 0" x 7' 10" x 1 3/4" WD.F Wood AL.3F Aluminum 20

Hardware Set #: 55.37.45.4SCMONS

Secure Side



Qty	Type	Description	Part Description	Finish	Power	Manufacturer
8	Hinge		Full Mortise - Heavy - 4-1/2"x4-1/2" - 5K - Ball Bearing			
1	Bolt		Concealed - Automatic			
1	Lockset		Mortise - Non-Electrified - Ent/Off (F04) - Lever - Deadbolt			
1	Coordinator		Soffit Mounted Bar			
2	Closer		Surface - Push Side - Parallel			
1	Astragal		T-Astragal - Aluminium			

Non-Secure Side



Hardware Set Notes:

Issue Comments:

Opening Remarks:



O1



O2



O3



O4



Building: 1

Level: 3

Mark: 1-328A

Room: CONFERENCE ROOM

Description: 3' 0" x 7' 0" x 1 3/4" WD.F Wood AL.LSL Aluminum

Hardware Set #: 55.95.50.4WS

Secure Side



Qty	Type	Description	Part Description	Finish	Power	Manufacturer
3	Hinge		Full Mortise - Heavy - 4-1/2"x4-1/2" - 5K			
1	Lockset		Cylindrical - Non-Electrified - Passage (F75) - Lever			
1	Stop		Wall Stops - Wall Stop			
1	Gasketing		Perimeter Gasketing - Surface			

Hardware Set Notes:

Non-Secure Side



Issue Comments:

Opening Remarks:



Building: 1

Level: 3

Mark: 1-329A

Room: OFFICE

Description: 3' 0" x 7' 0" x 1 3/4" WD.F Wood AL.LSL Aluminum

Hardware Set #: 55.95.50.4WS

Secure Side



Qty	Type	Description	Part Description	Finish	Power	Manufacturer
3	Hinge		Full Mortise - Heavy - 4-1/2"x4-1/2" - 5K			
1	Lockset		Cylindrical - Non-Electrified - Passage (F75) - Lever			
1	Stop		Wall Stops - Wall Stop			
1	Gasketing		Perimeter Gasketing - Surface			

Hardware Set Notes:

Non-Secure Side



Issue Comments:

Opening Remarks:



Building: 1

Level: 3

Mark: 1-330A

Room: OFFICE

Description: 3' 0" x 7' 0" x 1 3/4" WD.F Wood AL.RSL Aluminum

Hardware Set #: 55.95.50.4WS

Secure Side



Qty	Type	Description	Part Description	Finish	Power	Manufacturer
3	Hinge		Full Mortise - Heavy - 4-1/2"x4-1/2" - 5K			
1	Lockset		Cylindrical - Non-Electrified - Passage (F75) - Lever			
1	Stop		Wall Stops - Wall Stop			
1	Gasketing		Perimeter Gasketing - Surface			

Hardware Set Notes:

Non-Secure Side



Issue Comments:

Opening Remarks:



Building: 1

Level: 3

Mark: 1-331A

Room: OFFICE

Description: 3' 0" x 7' 0" x 1 3/4" WD.F Wood AL.RSL Aluminum

Secure Side



Hardware Set #: 55.95.50.4WS

Qty	Type	Description	Part Description	Finish	Power	Manufacturer
3	Hinge		Full Mortise - Heavy - 4-1/2"x4-1/2" - 5K			
1	Lockset		Cylindrical - Non-Electrified - Passage (F75) - Lever			
1	Stop		Wall Stops - Wall Stop			
1	Gasketing		Perimeter Gasketing - Surface			

Hardware Set Notes:

Non-Secure Side



Issue Comments:

Opening Remarks:



Building: 1

Level: 3

Mark: 1-332A

Room: OFFICE

Description: 3' 0" x 7' 0" x 1 3/4" WD.F Wood AL.RSL Aluminum

Hardware Set #: 55.95.50.4WS

Secure Side



Qty	Type	Description	Part Description	Finish	Power	Manufacturer
3	Hinge		Full Mortise - Heavy - 4-1/2"x4-1/2" - 5K			
1	Lockset		Cylindrical - Non-Electrified - Passage (F75) - Lever			
1	Stop		Wall Stops - Wall Stop			
1	Gasketing		Perimeter Gasketing - Surface			

Hardware Set Notes:

Non-Secure Side



Issue Comments:

Opening Remarks:



Building: 1

Level: 3

Mark: 1-334A

Room: DATA / TELECOM (MPOE) ROOM

Description: 3' 0" x 7' 0" x 1 3/4" WD.F Wood AL.3F Aluminum

Hardware Set #: 55.95.50.4WS

Secure Side



Qty	Type	Description	Part Description	Finish	Power	Manufacturer
3	Hinge		Full Mortise - Heavy - 4-1/2"x4-1/2" - 5K			
1	Lockset		Cylindrical - Non-Electrified - Passage (F75) - Lever			
1	Stop		Wall Stops - Wall Stop			
1	Gasketing		Perimeter Gasketing - Surface			

Hardware Set Notes:

Non-Secure Side



Issue Comments:

Opening Remarks:

Building: 1

Level: 4

Mark: 1-400A

Room: STAIR 1

Description: 3' 0" x 7' 0" x 1 3/4" WD.F Wood 3 Piece Hollow Metal 90

Issue Codes: **F9**

Secure Side

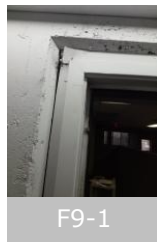

Hardware Set #: 55.10.71.4SRMWS

Qty	Type Description	Part Description	Finish	Power	Manufacturer
3	Hinge	Full Mortise - Heavy - 4-1/2"x4-1/2" - 5K - Ball Bearing			
1	Exit Device	Rim - Classroom - Lever			
1	Closer	Surface - Push Side - Parallel			
1	Stop	Wall Stops - Wall Stop			
1	Gasketing	Perimeter Gasketing - Surface			

Non-Secure Side


Hardware Set Notes:
Issue Comments:

 F9: Improper field modification or repair
 Issue Status: Non-Compliant

Opening Remarks:


Building: 1

Level: 4

Mark: 1-400B

Room: STAIR 2

Description: 3' 0" x 7' 0" x 1 3/4" WD.F Wood 3 Piece Hollow Metal 90

Issue Codes: **F9**

Secure Side


Hardware Set #: 55.10.71.4SRMWS

Qty	Type Description	Part Description	Finish	Power	Manufacturer
3	Hinge	Full Mortise - Heavy - 4-1/2"x4-1/2" - 5K - Ball Bearing			
1	Exit Device	Rim - Classroom - Lever Issue Code: ED5			
1	Closer	Surface - Push Side - Parallel			
1	Stop	Wall Stops - Wall Stop			
1	Gasketing	Perimeter Gasketing - Surface			

Non-Secure Side


Hardware Set Notes:
Issue Comments:

 ED5: Exit device/trim not securely fastened
 Comments: lever loose
 Issue Status: Non-Compliant

 F9: Improper field modification or repair
 Issue Status: Non-Compliant

Opening Remarks:


ED5-1



F9-1



Building: 1

Level: 4

Mark: 1-404A

Room: MEN'S

Description: 3' 0" x 7' 0" x 1 3/4" WD.F Wood AL.3F Aluminum

Hardware Set #: 55.95.64.4SNS

Secure Side



Qty	Type	Description	Part Description	Finish	Power	Manufacturer
3	Hinge		Full Mortise - Heavy - 4-1/2"x4-1/2" - 5K - Ball Bearing			
1	Lockset		Cylindrical - Non-Electrified - Passage (F75) - Lever			
1	Closer		Surface - Pull Side - Regular			
1	Gasketing		Perimeter Gasketing - Surface			

Hardware Set Notes:

Non-Secure Side



Issue Comments:

Opening Remarks:

Building: 1

Level: 4

Mark: 1-405A

Room: ELECT. ROOM

Description: 2' 8" x 7' 0" x 1 3/4" WD.F Wood 3 Piece Hollow Metal 90

Issue Codes: **F9**

Secure Side


Hardware Set #: 55.04.71.4NS

Qty	Type Description	Part Description	Finish	Power	Manufacturer
3	Hinge	Full Mortise - Heavy - 4-1/2"x4-1/2" - 5K			
1	Lockset	Cylindrical - Non-Electrified - Store (F86) - Knob			
1	Closer	Surface - Push Side - Parallel Issue Code: CL3			

Hardware Set Notes:

Non-Secure Side


Issue Comments:

 CL3: Missing/damaged/broken arm
 Comments: disconnected
 Issue Status: Non-Compliant

 F9: Improper field modification or repair
 Issue Status: Non-Compliant

Opening Remarks:


CL3-1



F9-1



Building: 1

Level: 4

Mark: 1-406A

Room: WOMEN'S

Description: 3' 0" x 7' 0" x 1 3/4" WD.F Wood AL.3F Aluminum 20

Secure Side



Hardware Set #: 55.95.74.4SNS

Qty	Type	Description	Part Description	Finish	Power	Manufacturer
3	Hinge		Full Mortise - Heavy - 4-1/2"x4-1/2" - 5K - Ball Bearing			
1	Lockset		Cylindrical - Non-Electrified - Passage (F75) - Lever			
1	Closer		Surface - Pull Side - Regular			
1	Gasketing		Perimeter Gasketing - Surface			

Hardware Set Notes:

Non-Secure Side



Issue Comments:

Opening Remarks:



O1



O2



Building: 1

Level: 4

Mark: 1-407A

Room: JANITOR

Description: 3' 0" x 7' 0" x 1 3/4" WD.F Wood AL.3F Aluminum

Secure Side



Hardware Set #: 55.95.50.4WS

Qty	Type	Description	Part Description	Finish	Power	Manufacturer
3	Hinge		Full Mortise - Heavy - 4-1/2"x4-1/2" - 5K			
1	Lockset		Cylindrical - Non-Electrified - Passage (F75) - Lever			
1	Stop		Wall Stops - Wall Stop			
1	Gasketing		Perimeter Gasketing - Surface			

Hardware Set Notes:

Non-Secure Side



Issue Comments:

Opening Remarks:

Building: 1

Level: 4

Mark: 1-408A

Room: BREAK. RM.

Description: 3' 0" x 7' 0" x 1 3/4" WD.V Wood AL.3F Aluminum

Secure Side


Hardware Set #: 55.95.61.4SWS

Qty	Type	Description	Part Description	Finish	Power	Manufacturer
3	Hinge		Full Mortise - Heavy - 4-1/2"x4-1/2" - 5K			
1	Lockset		Cylindrical - Non-Electrified - Passage (F75) - Lever			
1	Closer		Surface - Push Side - Parallel			
1	Stop		Wall Stops - Wall Stop			
1	Gasketing		Perimeter Gasketing - Surface			

Non-Secure Side


Hardware Set Notes:
Issue Comments:
Opening Remarks:


01



Building: 1

Level: 4

Mark: 1-411A

Room: OPEN OFFICE

Description: 3' 0" x 7' 10" x 1 3/4" WD.FG Wood AL.3F Aluminum

Hardware Set #: 55.95.50.4WS

Secure Side



Qty	Type	Description	Part Description	Finish	Power	Manufacturer
3	Hinge		Full Mortise - Heavy - 4-1/2"x4-1/2" - 5K			
1	Lockset		Cylindrical - Non-Electrified - Passage (F75) - Lever			
1	Stop		Wall Stops - Wall Stop			
1	Gasketing		Perimeter Gasketing - Surface			

Hardware Set Notes:

Non-Secure Side



Issue Comments:

Opening Remarks:

Building: 1

Level: 4

Mark: 1-412A

Room: OFFICE

Description: 3' 0" x 7' 0" x 1 3/4" WD.FG Wood AL.RSL Aluminum

Secure Side


Hardware Set #: 55.05.50.4WS Lever

Qty	Type	Description	Part Description	Finish	Power	Manufacturer
4	Hinge		Full Mortise - Heavy - 4-1/2"x4-1/2" - 5K			
1	Lockset		Cylindrical - Non-Electrified - Ent/Off (F109) - Lever			
1	Stop		Wall Stops - Wall Stop			

Hardware Set Notes:

Non-Secure Side


Issue Comments:
Opening Remarks:




Building: 1

Level: 4

Mark: 1-413A

Room: OPEN OFFICE

Description: 3' 0" x 7' 0" x 1 3/4" WD.FG Wood AL.3F Aluminum

Hardware Set #: 55.05.50.4WS Lever

Secure Side



Qty	Type	Description	Part Description	Finish	Power	Manufacturer
4	Hinge		Full Mortise - Heavy - 4-1/2"x4-1/2" - 5K			
1	Lockset		Cylindrical - Non-Electrified - Ent/Off (F109) - Lever			
1	Stop		Wall Stops - Wall Stop			

Hardware Set Notes:

Non-Secure Side



Issue Comments:

Opening Remarks:



Building: 1

Level: 4

Mark: 1-414A

Room: OFFICE

Description: 3' 0" x 7' 0" x 1 3/4" WD.FG Wood AL.LSL Aluminum

Hardware Set #: 55.95.50.4WS

Secure Side



Qty	Type	Description	Part Description	Finish	Power	Manufacturer
3	Hinge		Full Mortise - Heavy - 4-1/2"x4-1/2" - 5K			
1	Lockset		Cylindrical - Non-Electrified - Passage (F75) - Lever			
1	Stop		Wall Stops - Wall Stop			
1	Gasketing		Perimeter Gasketing - Surface			

Hardware Set Notes:

Non-Secure Side



Issue Comments:

Opening Remarks:



Building: 1

Level: 4

Mark: 1-415A

Room: OFFICE

Description: 3' 0" x 7' 0" x 1 3/4" WD.FG Wood AL.LSL Aluminum

Hardware Set #: 55.05.50.4WS Lever

Secure Side



Qty	Type	Description	Part Description	Finish	Power	Manufacturer
4	Hinge		Full Mortise - Heavy - 4-1/2"x4-1/2" - 5K			
1	Lockset		Cylindrical - Non-Electrified - Ent/Off (F109) - Lever			
1	Stop		Wall Stops - Wall Stop			

Hardware Set Notes:

Non-Secure Side



Issue Comments:

Opening Remarks:



Building: 1

Level: 4

Mark: 1-418A

Room: CONFERENCE ROOM

Description: 3' 0" x 7' 0" x 1 3/4" WD.FG Wood AL.RSL Aluminum

Hardware Set #: 55.95.50.4WS

Secure Side



Qty	Type	Description	Part Description	Finish	Power	Manufacturer
3	Hinge		Full Mortise - Heavy - 4-1/2"x4-1/2" - 5K			
1	Lockset		Cylindrical - Non-Electrified - Passage (F75) - Lever			
1	Stop		Wall Stops - Wall Stop			
1	Gasketing		Perimeter Gasketing - Surface			

Hardware Set Notes:

Non-Secure Side



Issue Comments:

Opening Remarks:



Building: 1

Level: 4

Mark: 1-419A

Room: OFFICE

Description: 3' 0" x 7' 0" x 1 3/4" WD.FG Wood AL.3F Aluminum

Hardware Set #: 55.05.50.4WS Lever

Secure Side



Qty	Type	Description	Part Description	Finish	Power	Manufacturer
4	Hinge		Full Mortise - Heavy - 4-1/2"x4-1/2" - 5K			
1	Lockset		Cylindrical - Non-Electrified - Ent/Off (F109) - Lever			
1	Stop		Wall Stops - Wall Stop			

Hardware Set Notes:

Non-Secure Side



Issue Comments:

Opening Remarks:



Building: 1

Level: 4

Mark: 1-423A

Room: CONFERENCE ROOM

Description: 3' 0" x 7' 0" x 1 3/4" WD.F Wood 3 Piece Hollow Metal 90

Hardware Set #: 55.95.74.4SNS

Secure Side



Qty	Type	Description	Part Description	Finish	Power	Manufacturer
3	Hinge		Full Mortise - Heavy - 4-1/2"x4-1/2" - 5K - Ball Bearing			
1	Lockset		Cylindrical - Non-Electrified - Passage (F75) - Lever			
1	Closer		Surface - Pull Side - Regular			
1	Gasketing		Perimeter Gasketing - Surface			

Hardware Set Notes:

Non-Secure Side



Issue Comments:

Opening Remarks:

Building: 1

Level: 4

Mark: 1-428A

Room: CONFERENCE ROOM

Description: 3' 0" x 7' 0" x 1 3/4" WD.FG Wood AL.3F Aluminum

Secure Side


Hardware Set #: 55.95.50.4WS

Qty	Type	Description	Part Description	Finish	Power	Manufacturer
3	Hinge		Full Mortise - Heavy - 4-1/2"x4-1/2" - 5K			
1	Lockset		Cylindrical - Non-Electrified - Passage (F75) - Lever Issue Code: LO2			
1	Stop		Wall Stops - Wall Stop			
1	Gasketing		Perimeter Gasketing - Surface			

Hardware Set Notes:

Non-Secure Side


Issue Comments:

 LO2: Lock strike missing/damaged/out of alignment
 Comments: missing
 Issue Status: Non-Compliant

Opening Remarks:


LO2-1

Building: 1

Level: 4

Mark: 1-430A

Room: OFFICE

Description: 3' 0" x 7' 0" x 1 3/4" WD.FG Wood AL.3F Aluminum

Secure Side


Hardware Set #: 55.95.50.4WS

Qty	Type	Description	Part Description	Finish	Power	Manufacturer
3	Hinge		Full Mortise - Heavy - 4-1/2"x4-1/2" - 5K			
1	Lockset		Cylindrical - Non-Electrified - Passage (F75) - Lever Issue Code: LO1			
1	Stop		Wall Stops - Wall Stop			
1	Gasketing		Perimeter Gasketing - Surface			

Hardware Set Notes:

Non-Secure Side


Issue Comments:

 LO1: Lock missing/damaged/not securely fastened
 Issue Status: Non-Compliant

Opening Remarks:


LO1-1



Building: 1

Level: 4

Mark: 1-432A

Room: OFFICE

Description: 3' 0" x 7' 0" x 1 3/4" WD.FG Wood AL.3F Aluminum

Hardware Set #: 55.95.50.4WS

Secure Side



Qty	Type	Description	Part Description	Finish	Power	Manufacturer
3	Hinge		Full Mortise - Heavy - 4-1/2"x4-1/2" - 5K			
1	Lockset		Cylindrical - Non-Electrified - Passage (F75) - Lever			
1	Stop		Wall Stops - Wall Stop			
1	Gasketing		Perimeter Gasketing - Surface			

Hardware Set Notes:

Non-Secure Side



Issue Comments:

Opening Remarks:



Building: 1

Level: 4

Mark: 1-433A

Room: OFFICE

Description: 3' 0" x 7' 0" x 1 3/4" WD.FG Wood AL.LSL Aluminum

Hardware Set #: 55.95.50.4WS

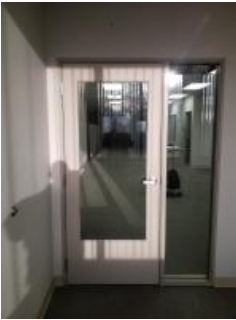
Secure Side



Qty	Type	Description	Part Description	Finish	Power	Manufacturer
3	Hinge		Full Mortise - Heavy - 4-1/2"x4-1/2" - 5K			
1	Lockset		Cylindrical - Non-Electrified - Passage (F75) - Lever			
1	Stop		Wall Stops - Wall Stop			
1	Gasketing		Perimeter Gasketing - Surface			

Hardware Set Notes:

Non-Secure Side



Issue Comments:

Opening Remarks:



Building: 1

Level: 4

Mark: 1-434A

Room: OFFICE

Description: 3' 0" x 7' 0" x 1 3/4" WD.FG Wood AL.RSL Aluminum

Hardware Set #: 55.95.50.4WS

Secure Side



Qty	Type	Description	Part Description	Finish	Power	Manufacturer
3	Hinge		Full Mortise - Heavy - 4-1/2"x4-1/2" - 5K			
1	Lockset		Cylindrical - Non-Electrified - Passage (F75) - Lever			
1	Stop		Wall Stops - Wall Stop			
1	Gasketing		Perimeter Gasketing - Surface			

Hardware Set Notes:

Non-Secure Side



Issue Comments:

Opening Remarks:



Building: 1

Level: 4

Mark: 1-440A

Room: BREAK. RM.

Description: 3' 0" x 7' 0" x 1 3/4" WD.F Wood AL.3F Aluminum

Hardware Set #: 55.95.64.4SNS

Secure Side



Qty	Type	Description	Part Description	Finish	Power	Manufacturer
3	Hinge		Full Mortise - Heavy - 4-1/2"x4-1/2" - 5K - Ball Bearing			
1	Lockset		Cylindrical - Non-Electrified - Passage (F75) - Lever			
1	Closer		Surface - Pull Side - Regular			
1	Gasketing		Perimeter Gasketing - Surface			

Hardware Set Notes:

Non-Secure Side



Issue Comments:

Opening Remarks:

Building: 1

Level: 5

Mark: 1-500A

Room: STAIR 1

Description: 3' 0" x 7' 0" x 1 3/4" WD.F Wood 3 Piece Hollow Metal 90

Issue Codes: **F9**

Secure Side


Hardware Set #: 55.10.71.4SRMWS

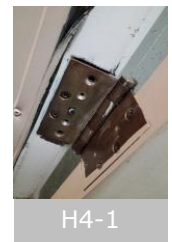
Qty	Type Description	Part Description	Finish	Power	Manufacturer
3	Hinge	Full Mortise - Heavy - 4-1/2"x4-1/2" - 5K - Ball Bearing Issue Code: H4			
1	Exit Device	Rim - Classroom - Lever			
1	Closer	Surface - Push Side - Parallel			
1	Stop	Wall Stops - Wall Stop			
1	Gasketing	Perimeter Gasketing - Surface			

Non-Secure Side


Hardware Set Notes:
Issue Comments:

 F9: Improper field modification or repair
 Issue Status: Non-Compliant

 H4: Hinge fastener(s) stripped, loose, missing or broken
 Issue Status: Non-Compliant

Opening Remarks:




Building: 1

Level: 5

Mark: 1-500B

Room: STAIR 2

Description: 3' 0" x 7' 0" x 1 3/4" WD.F Wood 3 Piece Hollow Metal 90

Hardware Set #: 55.10.71.4SRMWS

Secure Side



Qty	Type	Description	Part Description	Finish	Power	Manufacturer
3	Hinge		Full Mortise - Heavy - 4-1/2"x4-1/2" - 5K - Ball Bearing			
1	Exit Device		Rim - Classroom - Lever			
1	Closer		Surface - Push Side - Parallel			
1	Stop		Wall Stops - Wall Stop			
1	Gasketing		Perimeter Gasketing - Surface			

Non-Secure Side



Hardware Set Notes:

Issue Comments:

Opening Remarks:



O1



O2



Building: 1

Level: 5

Mark: 1-504A

Room: MEN'S

Description: 3' 0" x 7' 0" x 1 1/2" WD.F Wood AL.3F Aluminum

Hardware Set #: 55.95.62.4HSNS

Secure Side



Qty	Type	Description	Part Description	Finish	Power	Manufacturer
3	Hinge		Full Mortise - Heavy - 4-1/2"x4-1/2" - 5K - Ball Bearing			
1	Lockset		Cylindrical - Non-Electrified - Passage (F75) - Lever			
1	Closer		Surface - Push Side - Parallel - Hold Open			

Hardware Set Notes:

Non-Secure Side



Issue Comments:

Opening Remarks:



O1

Building: 1

Level: 5

Mark: 1-505A

Room: ELECT. ROOM

Description: 2' 8" x 7' 0" x 1 3/4" WD.F Wood 3 Piece Hollow Metal 20

Issue Codes: **F9**

Secure Side


Hardware Set #: 55.04.71.4NS

Qty	Type	Description	Part Description	Finish	Power	Manufacturer
3	Hinge		Full Mortise - Heavy - 4-1/2"x4-1/2" - 5K			
1	Lockset		Cylindrical - Non-Electrified - Store (F86) - Knob Issue Code: LO5			
1	Closer		Surface - Push Side - Parallel			

Hardware Set Notes:

Non-Secure Side


Issue Comments:

 F9: Improper field modification or repair
 Issue Status: Non-Compliant

 LO5: Latchbolt(s) not engaging strike/binding
 Issue Status: Non-Compliant

Opening Remarks:


O1



O2



O3



F9-1



LO5-1

Building: 1

Level: 5

Mark: 1-506A

Room: WOMEN'S

Description: 3' 0" x 7' 0" x 1 1/2" WD.F Wood AL.3F Aluminum

Hardware Set #: 55.95.62.4HSNS

Secure Side



Qty	Type	Description	Part Description	Finish	Power	Manufacturer
3	Hinge		Full Mortise - Heavy - 4-1/2"x4-1/2" - 5K - Ball Bearing			
1	Lockset		Cylindrical - Non-Electrified - Passage (F75) - Lever			
1	Closer		Surface - Push Side - Parallel - Hold Open			

Hardware Set Notes:

Non-Secure Side



Issue Comments:

Opening Remarks:



01



02



03



04



05



Building: 1

Level: 5

Mark: 1-507A

Room: JANITOR

Description: 3' 0" x 7' 0" x 1 1/2" WD.F Wood AL.3F Aluminum

Hardware Set #: 55.95.50.4SNS

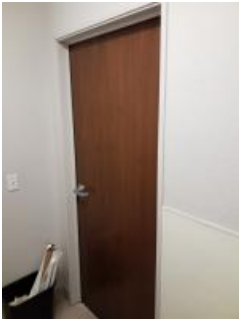
Secure Side



Qty	Type	Description	Part Description	Finish	Power	Manufacturer
3	Hinge		Full Mortise - Heavy - 4-1/2"x4-1/2" - 5K			
1	Lockset		Cylindrical - Non-Electrified - Passage (F75) - Lever			
1	Closer		Surface - Push Side - Parallel - Hold Open			

Hardware Set Notes:

Non-Secure Side



Issue Comments:

Opening Remarks:



O1



Building: 1

Level: 5

Mark: 1-520A

Room: CONFERENCE ROOM

Description: 3' 0" x 7' 0" x 1 3/4" WD.FG Wood AL.LSL.TR Aluminum

Hardware Set #: 55.95.50.4WS

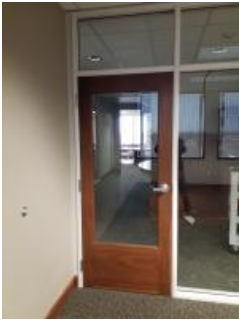
Secure Side



Qty	Type	Description	Part Description	Finish	Power	Manufacturer
3	Hinge		Full Mortise - Heavy - 4-1/2"x4-1/2" - 5K			
1	Lockset		Cylindrical - Non-Electrified - Passage (F75) - Lever			
1	Stop		Wall Stops - Wall Stop			
1	Gasketing		Perimeter Gasketing - Surface			

Hardware Set Notes:

Non-Secure Side



Issue Comments:

Opening Remarks:



Building: 1

Level: 5

Mark: 1-521A

Room: OFFICE

Description: 3' 0" x 7' 0" x 1 3/4" WD.FG Wood AL.TR Aluminum

Hardware Set #: 55.95.50.4WS

Secure Side



Qty	Type	Description	Part Description	Finish	Power	Manufacturer
3	Hinge		Full Mortise - Heavy - 4-1/2"x4-1/2" - 5K			
1	Lockset		Cylindrical - Non-Electrified - Passage (F75) - Lever			
1	Stop		Wall Stops - Wall Stop			
1	Gasketing		Perimeter Gasketing - Surface			

Hardware Set Notes:

Non-Secure Side



Issue Comments:

Opening Remarks:



Building: 1

Level: 5

Mark: 1-523A

Room: OFFICE

Description: 3' 0" x 7' 0" x 1 3/4" WD.FG Wood AL.RSL.TR Aluminum

Hardware Set #: 55.95.50.4WS

Secure Side



Qty	Type	Description	Part Description	Finish	Power	Manufacturer
3	Hinge		Full Mortise - Heavy - 4-1/2"x4-1/2" - 5K			
1	Lockset		Cylindrical - Non-Electrified - Passage (F75) - Lever			
1	Stop		Wall Stops - Wall Stop			
1	Gasketing		Perimeter Gasketing - Surface			

Hardware Set Notes:

Non-Secure Side



Issue Comments:

Opening Remarks:

Building: 1

Level: 5

Mark: 1-526A

Room: CIRCULATION

Description: 6' 0" x 8' 4" x 1 3/4" WD.FG Wood AL.3F Aluminum

Hardware Set #: 55.0593.00.4SMWS

Secure Side



Qty	Type	Description	Part Description	Finish	Power	Manufacturer
8	Hinge		Full Mortise - Heavy - 4-1/2"x4-1/2" - 5K			
1	Bolt		Concealed - Lever Extension			
1	Lockset		Cylindrical - Non-Electrified - Ent/Off (F109) - Lever			
2	Push/Pull		Pull - Lever			
2	Stop		Wall Stops - Wall Stop Issue Code: ST6			

Non-Secure Side



Hardware Set Notes:

Issue Comments:

ST6: Door stop damaged
Issue Status: Non-Compliant

Opening Remarks:



ST6-1

Building: 1

Level: 5

Mark: 1-530A

Room: SMALL CONFERENCE ROOM

Description: 3' 0" x 7' 0" x 1 3/4" WD.FG Wood AL.3F Aluminum

Secure Side



Hardware Set #: 55.95.50.4WS

Qty	Type	Description	Part Description	Finish	Power	Manufacturer
3	Hinge		Full Mortise - Heavy - 4-1/2"x4-1/2" - 5K			
1	Lockset		Cylindrical - Non-Electrified - Passage (F75) - Lever			
1	Stop		Wall Stops - Wall Stop			
1	Gasketing		Perimeter Gasketing - Surface			

Hardware Set Notes:

Non-Secure Side



Issue Comments:

Opening Remarks:



Building: 1

Level: 5

Mark: 1-530B

Room: SMALL CONFERENCE ROOM

Description: 3' 0" x 7' 0" x 1 3/4" WD.FG Wood AL.3F Aluminum

Hardware Set #: 55.95.50.4WS

Secure Side



Qty	Type	Description	Part Description	Finish	Power	Manufacturer
3	Hinge		Full Mortise - Heavy - 4-1/2"x4-1/2" - 5K			
1	Lockset		Cylindrical - Non-Electrified - Passage (F75) - Lever			
1	Stop		Wall Stops - Wall Stop			
1	Gasketing		Perimeter Gasketing - Surface			

Hardware Set Notes:

Non-Secure Side



Issue Comments:

Opening Remarks:



Building: 1

Level: 5

Mark: 1-531A

Room: OFFICE

Description: 3' 0" x 7' 0" x 1 3/4" WD.FG Wood AL.3F Aluminum

Hardware Set #: 55.95.50.4WS

Secure Side



Qty	Type	Description	Part Description	Finish	Power	Manufacturer
3	Hinge		Full Mortise - Heavy - 4-1/2"x4-1/2" - 5K			
1	Lockset		Cylindrical - Non-Electrified - Passage (F75) - Lever			
1	Stop		Wall Stops - Wall Stop			
1	Gasketing		Perimeter Gasketing - Surface			

Hardware Set Notes:

Non-Secure Side



Issue Comments:

Opening Remarks:



Building: 1

Level: 5

Mark: 1-532A

Room: OFFICE

Description: 3' 0" x 7' 0" x 1 3/4" WD.FG Wood AL.3F Aluminum

Hardware Set #: 55.95.50.4WS

Secure Side



Qty	Type	Description	Part Description	Finish	Power	Manufacturer
3	Hinge		Full Mortise - Heavy - 4-1/2"x4-1/2" - 5K			
1	Lockset		Cylindrical - Non-Electrified - Passage (F75) - Lever			
1	Stop		Wall Stops - Wall Stop			
1	Gasketing		Perimeter Gasketing - Surface			

Hardware Set Notes:

Non-Secure Side



Issue Comments:

Opening Remarks:



Building: 1

Level: 5

Mark: 1-534A

Room: OFFICE

Description: 3' 0" x 7' 0" x 1 3/4" WD.FG Wood AL.3F Aluminum

Hardware Set #: 55.95.50.4WS

Secure Side



Qty	Type	Description	Part Description	Finish	Power	Manufacturer
3	Hinge		Full Mortise - Heavy - 4-1/2"x4-1/2" - 5K			
1	Lockset		Cylindrical - Non-Electrified - Passage (F75) - Lever			
1	Stop		Wall Stops - Wall Stop			
1	Gasketing		Perimeter Gasketing - Surface			

Hardware Set Notes:

Non-Secure Side



Issue Comments:

Opening Remarks:

Building: 1

Level: 5

Mark: 1-542A

Room: OFFICE

Description: 3' 0" x 7' 0" x 1 3/4" WD.FG Wood AL.LSL.TR Aluminum

Secure Side


Hardware Set #: 55.95.50.4WS

Qty	Type	Description	Part Description	Finish	Power	Manufacturer
3	Hinge		Full Mortise - Heavy - 4-1/2"x4-1/2" - 5K			
1	Lockset		Cylindrical - Non-Electrified - Passage (F75) - Lever			
1	Stop		Wall Stops - Wall Stop			
1	Gasketing		Perimeter Gasketing - Surface			

Hardware Set Notes:

Non-Secure Side


Issue Comments:
Opening Remarks:


O1



O2

Building: 1

Level: 5

Mark: 1-600A

Room: ROOF ENCL

Description: 3' 0" x 7' 0" x 1 3/4" HM.F.LOUV Hollow Metal 3 Piece Hollow Metal

Hardware Set #: 55.05.61.4SEGN5

Secure Side



Qty	Type	Description	Part Description	Finish	Power	Manufacturer
3	Hinge		Full Mortise - Heavy - 4-1/2"x4-1/2" - 5K			
1	Lockset		Cylindrical - Non-Electrified - Ent/Off (F109) - Knob			
1	Closer		Surface - Push Side - Parallel			
1	Plate		Guards - Latch Protectors			
1	Plate		Plates - Kick Plate			

Non-Secure Side


Hardware Set Notes:
Issue Comments:
Opening Remarks:

Building: 1

Level: 6

Mark: 1-601A

Room: ROOF ENCL

Description: 3' 0" x 7' 0" x 1 3/4" HM.F Hollow Metal 3 Piece Hollow Metal

Secure Side


Hardware Set #: 55.37.71.4SNS

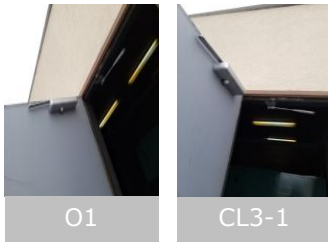
Qty	Type	Description	Part Description	Finish	Power	Manufacturer
3	Hinge		Full Mortise - Heavy - 4-1/2"x4-1/2" - 5K - Ball Bearing			
1	Lockset		Cylindrical - Non-Electrified - Class (F84) - Lever			
1	Closer		Surface - Push Side - Parallel Issue Code: CL3			
1	Gasketing		Perimeter Gasketing - Surface			

Hardware Set Notes:

Non-Secure Side


Issue Comments:

 CL3: Missing/damaged/broken arm
 Comments: disconnected
 Issue Status: Non-Compliant

Opening Remarks:




Building: 1

Level: 6

Mark: 1-602A

Room: ROOF ENCL

Description: 3' 0" x 7' 0" x 1 3/4" HM.F Hollow Metal 3 Piece Hollow Metal

Secure Side



Hardware Set #: 55.95.61.4NS

Qty	Type	Description	Part Description	Finish	Power	Manufacturer
3	Hinge		Full Mortise - Heavy - 4-1/2"x4-1/2" - 5K			
1	Lockset		Cylindrical - Non-Electrified - Passage (F75) - Lever			
1	Closer		Surface - Push Side - Parallel			

Hardware Set Notes:

Non-Secure Side



Issue Comments:

Opening Remarks:

Building: 2

Level: Basement

Mark: 2-000A

Room: STAIR 1

Description: 3' 0" x 7' 0" x 1 3/4" WD.F Wood 3 Piece Hollow Metal 90

Issue Codes: **F9**

Secure Side


Hardware Set #: 55.37.71.4S

Qty	Type	Description	Part Description	Finish	Power	Manufacturer
3	Hinge		Full Mortise - Heavy - 4-1/2"x4-1/2" - 5K			
1	Lockset		Cylindrical - Non-Electrified - Class (F84) - Knob			
1	Closer		Surface - Push Side - Parallel - Thru Bolts			

Hardware Set Notes:

Non-Secure Side


Issue Comments:

 F9: Improper field modification or repair
 Issue Status: Non-Compliant

Opening Remarks:


O1



O2



F9-1



F9-2

Building: 2

Level: Basement

Mark: 2-000B

Room: STAIR 2

Description: 3' 0" x 7' 0" x 1 3/4" WD.F Wood 3 Piece Hollow Metal 90

Issue Codes: **D2, F9**

Secure Side


Hardware Set #: 55.37.71.4S

Qty	Type	Description	Part Description	Finish	Power	Manufacturer
3	Hinge		Full Mortise - Heavy - 4-1/2"x4-1/2" - 5K			
1	Lockset		Cylindrical - Non-Electrified - Class (F84) - Knob			
1	Closer		Surface - Push Side - Parallel - Thru Bolts			

Hardware Set Notes:

Non-Secure Side


Issue Comments:

D2: Door damaged (bent, dented, delaminating)

Issue Status: Non-Compliant

F9: Improper field modification or repair

Issue Status: Non-Compliant

Opening Remarks:


O1



O2



D2-1



D2-2



F9-1

Building: 2

Level: Basement

Mark: 2-002A

Room: POLICE EVIDENCE STORAGE

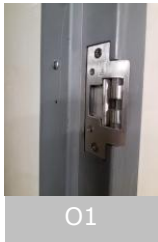
Description: 4' 0" x 6' 8" x 1 3/4" HM.F Hollow Metal 3 Piece Hollow Metal None

Secure Side


Hardware Set #: 55.37A.50.4CRNS

Qty	Type	Description	Part Description	Finish	Power	Manufacturer
3	Hinge		Full Mortise - Heavy - 4-1/2"x4-1/2" - 5K - Ball Bearing			
1	Lockset		Cylindrical - Non-Electrified - Class (F84) - Lever			
1	Electronic Control		Card/Wall Reader			
1	Electronic Control		Door Contact			
1	Electronic Control		Electric Strike - HES			

Non-Secure Side


Hardware Set Notes:
Issue Comments:
Opening Remarks:


Building: 2

Level: Basement

Mark: 2-003A

Room: MECH.

Description: 2' 8" x 7' 0" x 1 3/4" WD.F Wood 3 Piece Hollow Metal None

Issue Codes: **F9**

Secure Side


Hardware Set #: 55.05.71.4WS

Qty	Type Description	Part Description	Finish	Power	Manufacturer
3	Hinge	Full Mortise - Heavy - 4-1/2"x4-1/2" - 5K			
1	Lockset	Cylindrical - Non-Electrified - Ent/Off (F109) - Knob			
1	Closer	Surface - Push Side - Parallel Issue Code: CL3			
1	Stop	Wall Stops - Wall Stop			

Non-Secure Side


Hardware Set Notes:
Issue Comments:

 CL3: Missing/damaged/broken arm
 Comments: Disconnected
 Issue Status: Non-Compliant

 F9: Improper field modification or repair
 Issue Status: Non-Compliant

Opening Remarks:


O1



CL3-1



F9-1

Building: 2

Level: Basement

Mark: 2-005A

Room: CORRIDOR

Description: 4' 0" x 6' 8" x 1 3/4" HM.F Hollow Metal 3 Piece Hollow Metal None

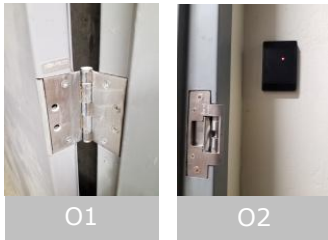
Hardware Set #: 55.37A.50.4CRNS

Secure Side



Qty	Type	Description	Part Description	Finish	Power	Manufacturer
3	Hinge		Full Mortise - Heavy - 4-1/2"x4-1/2" - 5K - Ball Bearing			
1	Lockset		Cylindrical - Non-Electrified - Class (F84) - Lever			
1	Electronic Control		Card/Wall Reader			
1	Electronic Control		Door Contact			
1	Electronic Control		Electric Strike - HES			

Non-Secure Side


Hardware Set Notes:
Issue Comments:
Opening Remarks:


O1

O2

Building: 2

Level: Basement

Mark: 2-007A

Room: ELECT. ROOM

Description: 2' 8" x 7' 0" x 1 3/4" WD.F Wood 3 Piece Hollow Metal None

Secure Side


Hardware Set #: 55.05.71.4NS

Qty	Type	Description	Part Description	Finish	Power	Manufacturer
3	Hinge		Full Mortise - Heavy - 4-1/2"x4-1/2" - 5K			
1	Lockset		Cylindrical - Non-Electrified - Ent/Off (F109) - Knob Issue Code: LO2			
1	Closer		Surface - Push Side - Parallel			

Hardware Set Notes:

Non-Secure Side


Issue Comments:

 LO2: Lock strike missing/damaged/out of alignment
 Issue Status: Non-Compliant

Opening Remarks:


Building: 2

Level: Basement

Mark: 2-009A

Room: IT NETWORK LAB / PC SUPPORT

Description: 6' 0" x 7' 0" x 1 3/4" WD.F Wood 3 Piece Hollow Metal

Secure Side


Hardware Set #: 55.04.00.4MNS

Qty	Type	Description	Part Description	Finish	Power	Manufacturer
6	Hinge		Full Mortise - Heavy - 4-1/2"x4-1/2" - 5K			
1	Bolt		Surface - Surface			
1	Lockset		Cylindrical - Non-Electrified - Store (F86) - Knob			
1	Astragal		Z-Astragal - Steel - Surface			

Hardware Set Notes:

Non-Secure Side


Issue Comments:
Opening Remarks:


01



02



03



04



05



06

Building: 2

Level: Basement

Mark: 2-011A

Room: PUBLIC WORKS MAINTENANCE ROOM

Description: 6' 0" x 7' 0" x 1 3/4" WD.F Wood 3 Piece Hollow Metal None

Secure Side


Hardware Set #: 55.04.00.4MNS Guard

Qty	Type	Description	Part Description	Finish	Power	Manufacturer
6	Hinge		Full Mortise - Heavy - 4-1/2"x4-1/2" - 5K			
1	Bolt		Surface - Surface			
1	Bolt		Surface - Surface - Lockable			
1	Lockset		Cylindrical - Non-Electrified - Store (F86) - Knob			
2	Plate		Guards - Latch Protectors			

Non-Secure Side


Hardware Set Notes:
Issue Comments:
Opening Remarks:


01



02



03



04

Building: 2

Level: Basement

Mark: 2-017A

Room: MAIL ROOM

Description: 2' 8" x 7' 0" x 1 3/4" WD.F Wood 3 Piece Hollow Metal 20

Secure Side


Hardware Set #: 55.05.71.4NS-1

Qty	Type	Description	Part Description	Finish	Power	Manufacturer
3	Hinge		Full Mortise - Heavy - 4-1/2"x4-1/2" - 5K			
1	Lockset		Cylindrical - Non-Electrified - Ent/Off (F109) - Knob			
1	Closer		Surface - Push Side - Parallel Issue Code: CL3			

Hardware Set Notes:

Non-Secure Side


Issue Comments:

 CL3: Missing/damaged/broken arm
 Comments: Disconnected
 Issue Status: Non-Compliant

Opening Remarks:


O1



O2



O3



O4



CL3-1



Building: 2

Level: 1

Mark: 2-101A

Room: PUBLIC LOBBY

Description: 6' 0" x 7' 0" x 1 3/4" AL.FG Aluminum AL.3F Aluminum

Hardware Set #: 05.13.20.3HSCVNS

Secure Side



Qty	Type	Description	Part Description	Finish	Power	Manufacturer
4	Pivot		Floor Closer - Center Hung - Hold Open			
1	Exit Device		Concealed Vertical Rod - Exit Only - Pull			
1	Exit Device		Concealed Vertical Rod - Classroom - Pull - Cylinder Dogging			
1	Gasketing		Perimeter Gasketing - Surface			

Hardware Set Notes:

Non-Secure Side



Issue Comments:

Opening Remarks:



01



02



03



04



05

Building: 2

Level: 1

Mark: 2-111A

Room: PUBLIC LOBBY

Description: 6' 0" x 7' 0" x 1 3/4" AL.FG Aluminum AL.TR Aluminum

Secure Side



Non-Secure Side


Hardware Set #: 05.13.20.3HSCRCVNS

Qty	Type	Description	Part Description	Finish	Power	Manufacturer
1	Power Transfer		Surface			
4	Pivot		Floor Closer - Center Hung - Hold Open			
1	Exit Device		Concealed Vertical Rod - Exit Only - Pull - Cylinder Dogging			
1	Exit Device		Concealed Vertical Rod - Classroom - Pull - Cylinder Dogging - Latch Retraction			
1	Gasketing		Perimeter Gasketing - Surface			
1	Electronic Control		Card/Wall Reader			

Hardware Set Notes:
Issue Comments:
Opening Remarks:


01



02



03



04

Building: 2

Level: 1

Mark: 2-122A

Room: CORRIDOR

Description: 3' 0" x 7' 0" x 1 3/4" WD.F Wood 3 Piece Hollow Metal 60

Secure Side


Hardware Set #: 55.05.71.4MOWS

Qty	Type	Description	Part Description	Finish	Power	Manufacturer
3	Hinge		Full Mortise - Heavy - 4-1/2"x4-1/2" - 5K			
1	Lockset		Cylindrical - Non-Electrified - Ent/Off (F109) - Lever - Knob			
1	Closer		Surface - Push Side - Parallel - Thru Bolts			
1	Stop		Wall Stops - Wall Stop			
1	Gasketing		Perimeter Gasketing - Surface			

Non-Secure Side


Hardware Set Notes:
Issue Comments:
Opening Remarks:


O1



O2



O3



O4



Building: 2

Level: 1

Mark: 2-123B

Room: OPEN OFFICE

Description: 3' 0" x 7' 0" x 1 3/4" WD.F Wood 3 Piece Hollow Metal

Hardware Set #: 55.05.50.4WS Lever

Secure Side



Qty	Type	Description	Part Description	Finish	Power	Manufacturer
4	Hinge		Full Mortise - Heavy - 4-1/2"x4-1/2" - 5K			
1	Lockset		Cylindrical - Non-Electrified - Ent/Off (F109) - Lever			
1	Stop		Wall Stops - Wall Stop			

Hardware Set Notes:

Non-Secure Side



Issue Comments:

Opening Remarks:

Building: 2

Level: 1

Mark: 2-130B

Room: OPEN OFFICE REVENUE

Description: 6' 0" x 7' 0" x 1 3/4" AL.FG Aluminum AL.3F Aluminum

Secure Side



Non-Secure Side


Hardware Set #: 00.13.20.3HSLCRCV

Qty	Type	Description	Part Description	Finish	Power	Manufacturer
4	Pivot		Floor Closer - Center Hung - Hold Open			
1	Exit Device		Concealed Vertical Rod - Exit Only - Pull - Cylinder Dogging			
1	Exit Device		Concealed Vertical Rod - Classroom - Pull - Cylinder Dogging			
1	Gasketing		Perimeter Gasketing - Surface			
1	Electronic Control		Magnetic Hold			
1	Electronic Control		Keypad			
1	Electronic Control		Exit Switch			
1	Electronic Control		Motion Sensor			

Hardware Set Notes:
Issue Comments:
Opening Remarks:


01



02



03



04



05



06

Building: 2

Level: 2

Mark: 2-200A

Room: STAIR 1

Description: 3' 0" x 7' 0" x 1 3/4" WD.F Wood 3 Piece Hollow Metal 90

Issue Codes: **F9**

Secure Side


Hardware Set #: 55.37.71.4SWS

Qty	Type Description	Part Description	Finish	Power	Manufacturer
3	Hinge	Full Mortise - Heavy - 4-1/2"x4-1/2" - 5K			
1	Lockset	Cylindrical - Non-Electrified - Class (F84) - Knob			
1	Closer	Surface - Push Side - Parallel - Thru Bolts			
1	Stop	Wall Stops - Wall Stop			
1	Gasketing	Perimeter Gasketing - Surface			

Non-Secure Side


Hardware Set Notes:
Issue Comments:

 F9: Improper field modification or repair
 Issue Status: Non-Compliant

Opening Remarks:

30 minute temp rise



O1



F9-1



F9-2



Building: 2

Level: 2

Mark: 2-200B

Room: STAIR 2

Description: 3' 0" x 7' 0" x 1 3/4" WD.F Wood 3 Piece Hollow Metal 90

Secure Side



Hardware Set #: 55.37.71.4SWS

Qty	Type	Description	Part Description	Finish	Power	Manufacturer
3	Hinge		Full Mortise - Heavy - 4-1/2"x4-1/2" - 5K			
1	Lockset		Cylindrical - Non-Electrified - Class (F84) - Knob			
1	Closer		Surface - Push Side - Parallel - Thru Bolts			
1	Stop		Wall Stops - Wall Stop			
1	Gasketing		Perimeter Gasketing - Surface			

Non-Secure Side



Hardware Set Notes:

Issue Comments:

Opening Remarks:

30 minute temp rise



O1



O2



O3



O4

Building: 2

Level: 2

Mark: 2-204A

Room: MEN'S

Description: 3' 0" x 8' 10" x 1 3/4" WD.F Wood 3 Piece Hollow Metal 20

Secure Side


Hardware Set #: 55.37A.71.4NS

Qty	Type	Description	Part Description	Finish	Power	Manufacturer
4	Hinge		Full Mortise - Heavy - 4-1/2"x4-1/2" - 5K			
1	Lockset		Cylindrical - Electrified - Fail Secure - Lever			
1	Closer		Surface - Push Side - Parallel			

Hardware Set Notes:

Non-Secure Side


Issue Comments:
Opening Remarks:


Building: 2

Level: 2

Mark: 2-206A

Room: WOMEN'S

Description: 3' 0" x 8' 10" x 1 3/4" WD.F Wood 3 Piece Hollow Metal 20

Issue Codes: **F2**

Secure Side


Hardware Set #: 55.37A.71.4NS

Qty	Type Description	Part Description	Finish	Power	Manufacturer
4	Hinge	Full Mortise - Heavy - 4-1/2"x4-1/2" - 5K			
1	Lockset	Cylindrical - Electrified - Fail Secure - Lever Issue Code: LO1			
1	Closer	Surface - Push Side - Parallel Issue Code: CL6			

Hardware Set Notes:

Non-Secure Side


Issue Comments:

 CL6: Closer not securely fastened
 Issue Status: Non-Compliant

 F2: Damaged/rust through on frame
 Issue Status: Non-Compliant

 LO1: Lock missing/damaged/not securely fastened
 Issue Status: Non-Compliant

Opening Remarks:


O1



O2



CL6-1



F2-1



LO1-1

Building: 2

Level: 2

Mark: 2-208A

Room: CIRC.

Description: 3' 0" x 7' 0" x 1 3/4" WD.F Wood 3 Piece Hollow Metal

Secure Side


Hardware Set #: 55.37.50.NS

Qty	Type	Description	Part Description	Finish	Power	Manufacturer
3	Hinge		Full Mortise - Heavy - 4-1/2"x4-1/2" - 5K			
1	Lockset		Cylindrical - Non-Electrified - Class (F84) - Lever			

Hardware Set Notes:

Non-Secure Side


Issue Comments:
Opening Remarks:


Building: 2

Level: 2

Mark: 2-212A

Room: OFFICE

Description: 3' 0" x 7' 0" x 1 3/4" WD.F Wood AL.LSL Aluminum

Secure Side


Hardware Set #: 55.05.50.4NS

Qty	Type	Description	Part Description	Finish	Power	Manufacturer
2	Hinge		Full Mortise - Heavy - 4-1/2"x4-1/2" - 5K			
1	Lockset		Cylindrical - Non-Electrified - Ent/Off (F109) - Lever			

Hardware Set Notes:

Non-Secure Side


Issue Comments:
Opening Remarks:


O1



O2



Building: 2

Level: 2

Mark: 2-213A

Room: OFFICE

Description: 3' 0" x 7' 0" x 1 3/4" WD.F Wood 3 Piece Hollow Metal

Secure Side



Hardware Set #: 55.05.50.4NS

Qty	Type	Description	Part Description	Finish	Power	Manufacturer
2	Hinge		Full Mortise - Heavy - 4-1/2"x4-1/2" - 5K			
1	Lockset		Cylindrical - Non-Electrified - Ent/Off (F109) - Lever Issue Code: OT			

Hardware Set Notes:

Non-Secure Side



Issue Comments:

OT: Other
Comments: Door does not fully close. Lock not engaging strike fully
Issue Status: Non-Compliant

Opening Remarks:

Building: 2

Level: 2

Mark: 2-214A

Room: OPEN OFFICE

Description: 3' 0" x 7' 0" x 1 3/4" WD.F Wood 3 Piece Hollow Metal

Secure Side



Hardware Set #: 55.05.50.4NS

Qty	Type	Description	Part Description	Finish	Power	Manufacturer
2	Hinge		Full Mortise - Heavy - 4-1/2"x4-1/2" - 5K			
1	Lockset		Cylindrical - Non-Electrified - Ent/Off (F109) - Lever			

Hardware Set Notes:

Non-Secure Side



Issue Comments:

Opening Remarks:

Building: 2

Level: 2

Mark: 2-218A

Room: OPEN OFFICE

Description: 3' 0" x 8' 10" x 1 3/4" WD.F Wood 3 Piece Hollow Metal 20

Hardware Set #: 55.37.71.4SESNS.PP

Secure Side



Qty	Type	Description	Part Description	Finish	Power	Manufacturer
4	Hinge		Full Mortise - Heavy - 4-1/2"x4-1/2" - 5K			
1	Lockset		Cylindrical - Non-Electrified - Class (F84) - Lever			
1	Closer		Surface - Push Side - Parallel			
1	Plate		Guards - Latch Protectors			
1	Gasketing		Perimeter Gasketing - Surface			

Non-Secure Side


Hardware Set Notes:
Issue Comments:
Opening Remarks:

Aiphone JP-DV intercom



01



02



03



04

Building: 2

Level: 2

Mark: 2-219A

Room: OFFICE

Description: 3' 0" x 8' 10" x 1 3/4" WD.F Wood 3 Piece Hollow Metal

Secure Side



Hardware Set #: 55.37.50.4JNS

Qty	Type	Description	Part Description	Finish	Power	Manufacturer
4	Hinge		Full Mortise - Heavy - 4-1/2"x4-1/2" - 5K			
1	Lockset		Cylindrical - Non-Electrified - Class (F84) - Lever			
1	Coat Hook					

Hardware Set Notes:

Non-Secure Side



Issue Comments:

Opening Remarks:



Building: 2

Level: 2

Mark: 2-220A

Room: OFFICE

Description: 3' 0" x 8' 10" x 1 3/4" WD.F Wood 3 Piece Hollow Metal

Hardware Set #: 55.05.50.4NS-2

Secure Side



Qty	Type	Description	Part Description	Finish	Power	Manufacturer
4	Hinge		Full Mortise - Heavy - 4-1/2"x4-1/2" - 5K			
1	Lockset		Cylindrical - Non-Electrified - Ent/Off (F109) - Lever			

Hardware Set Notes:

Non-Secure Side



Issue Comments:

Opening Remarks:

Building: 2

Level: 2

Mark: 2-223A

Room: OPEN OFFICE

Description: 3' 0" x 8' 10" x 1 3/4" WD.F Wood 3 Piece Hollow Metal 20

Hardware Set #: 55.37.71.4SCRESNS.PP

Secure Side

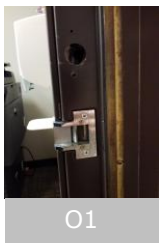


Qty	Type	Description	Part Description	Finish	Power	Manufacturer
4	Hinge		Full Mortise - Heavy - 4-1/2"x4-1/2" - 5K			
1	Lockset		Cylindrical - Non-Electrified - Class (F84) - Lever			
1	Closer		Surface - Push Side - Parallel			
1	Plate		Guards - Latch Protectors			
1	Gasketing		Perimeter Gasketing - Surface			
1	Electronic Control		Card/Wall Reader			
1	Electronic Control		Electric Strike - HES			

Non-Secure Side


Hardware Set Notes:
Issue Comments:
Opening Remarks:

Aiphone JP-DV intercom + ES + CR



01



02



03



Building: 2

Level: 2

Mark: 2-225A

Room: CONF. ROOM

Description: 3' 0" x 8' 10" x 1 3/4" WD.F Wood 3 Piece Hollow Metal

Hardware Set #: 55.05.50.4NS

Secure Side



Qty	Type	Description	Part Description	Finish	Power	Manufacturer
2	Hinge		Full Mortise - Heavy - 4-1/2"x4-1/2" - 5K			
1	Lockset		Cylindrical - Non-Electrified - Ent/Off (F109) - Lever			

Hardware Set Notes:

Non-Secure Side



Issue Comments:

Opening Remarks:



Building: 2

Level: 2

Mark: 2-226B

Room: BREAK ROOM

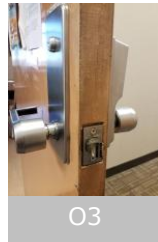
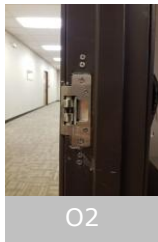
Description: 3' 0" x 7' 0" x 1 3/4" WD.F Wood 3 Piece Hollow Metal 20

Secure Side


Hardware Set #: 55.37A.71.4ES

Qty	Type	Description	Part Description	Finish	Power	Manufacturer
3	Hinge		Full Mortise - Heavy - 4-1/2"x4-1/2" - 5K			
1	Lockset		Cylindrical - Electrified - Fail Secure - Lever			
1	Closer		Surface - Push Side - Parallel			
1	Stop		Kickdown Door Stop			
1	Electronic Control		Electric Strike - HES			

Non-Secure Side


Hardware Set Notes:
Issue Comments:
Opening Remarks:


Building: 2

Level: 2

Mark: 2-228A

Room: OFFICE

Description: 3' 0" x 6' 8" x 1 3/4" WD.F Wood 3 Piece Hollow Metal

Secure Side


Hardware Set #: 55.95.50.WS

Qty	Type	Description	Part Description	Finish	Power	Manufacturer
3	Hinge		Full Mortise - Standard - 3-1/2"x3-1/2" - 5K			
1	Lockset		Cylindrical - Non-Electrified - Passage (F75) - Lever			
1	Stop		Wall Stops - Wall Stop			

Hardware Set Notes:

Non-Secure Side


Issue Comments:
Opening Remarks:


O1



O2

Building: 2

Level: 2

Mark: 2-229A

Room: OFFICE

Description: 3' 0" x 6' 8" x 1 3/4" WD.F Wood 3 Piece Hollow Metal

Secure Side

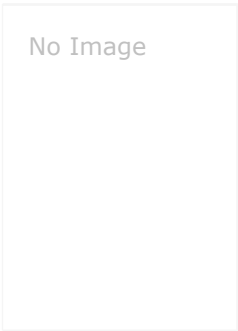


Hardware Set #: 55.05.50.WS

Qty	Type	Description	Part Description	Finish	Power	Manufacturer
2	Hinge		Full Mortise - Standard - 3-1/2"x3-1/2" - 5K			
1	Lockset		Cylindrical - Non-Electrified - Ent/Off (F109) - Knob			
1	Stop		Wall Stops - Wall Stop			

Hardware Set Notes:

Non-Secure Side



Issue Comments:

Opening Remarks:

Building: 2

Level: 2

Mark: 2-230A

Room: SHARED OFFICE

Description: 3' 0" x 6' 8" x 1 3/4" WD.F Wood 3 Piece Hollow Metal

Secure Side

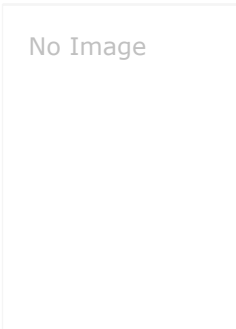


Hardware Set #: 55.05.50.WS

Qty	Type	Description	Part Description	Finish	Power	Manufacturer
2	Hinge		Full Mortise - Standard - 3-1/2"x3-1/2" - 5K			
1	Lockset		Cylindrical - Non-Electrified - Ent/Off (F109) - Knob			
1	Stop		Wall Stops - Wall Stop			

Hardware Set Notes:

Non-Secure Side



Issue Comments:

Opening Remarks:



O1



Building: 2

Level: 2

Mark: 2-231A

Room: OPEN OFFICE

Description: 3' 0" x 6' 8" x 1 3/4" WD.F Wood 3 Piece Hollow Metal

Hardware Set #: 55.95.50.WS-1

Secure Side



Qty	Type	Description	Part Description	Finish	Power	Manufacturer
2	Hinge		Full Mortise - Standard - 3-1/2"x3-1/2" - 5K			
1	Lockset		Cylindrical - Non-Electrified - Passage (F75) - Lever			
1	Stop		Wall Stops - Wall Stop			

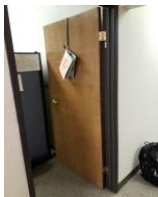
Hardware Set Notes:

Non-Secure Side



Issue Comments:

Opening Remarks:



O1

Building: 2

Level: 2

Mark: 2-232A

Room: OPEN OFFICE

Description: 3' 0" x 6' 8" x 1 3/4" WD.F Wood 3 Piece Hollow Metal

Secure Side


Hardware Set #: 55.95.50.WS-1

Qty	Type	Description	Part Description	Finish	Power	Manufacturer
2	Hinge		Full Mortise - Standard - 3-1/2"x3-1/2" - 5K			
1	Lockset		Cylindrical - Non-Electrified - Passage (F75) - Lever			
1	Stop		Wall Stops - Wall Stop			

Hardware Set Notes:

Non-Secure Side


Issue Comments:
Opening Remarks:


O1



O2



O3

Building: 2

Level: 2

Mark: 2-234A

Room: CORRIDOR

Description: 3' 0" x 7' 0" x 1 3/4" WD.F Wood 3 Piece Hollow Metal 90

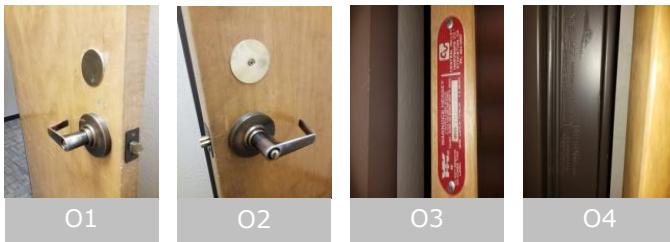
Secure Side


Hardware Set #: 55.05.71.4SWS

Qty	Type	Description	Part Description	Finish	Power	Manufacturer
3	Hinge		Full Mortise - Heavy - 4-1/2"x4-1/2" - 5K - Ball Bearing			
1	Lockset		Cylindrical - Non-Electrified - Ent/Off (F109) - Lever			
1	Closer		Surface - Pull Side - Regular			

Hardware Set Notes:

Non-Secure Side


Issue Comments:
Opening Remarks:


Building: 2

Level: 3

Mark: 2-300A

Room: STAIR 1

Description: 3' 0" x 7' 0" x 1 3/4" WD.F Wood 3 Piece Hollow Metal 90

Secure Side


Hardware Set #: 55.10.71.4MOWS

Qty	Type	Description	Part Description	Finish	Power	Manufacturer
3	Hinge		Full Mortise - Heavy - 4-1/2"x4-1/2" - 5K			
1	Lockset		Cylindrical - Non-Electrified - Ent/Off (F04) - Interconnecting - Lever - Knob Issue Code: LO3,LO6			
1	Closer		Surface - Push Side - Parallel - Thru Bolts			
1	Stop		Wall Stops - Wall Stop			
1	Gasketing		Perimeter Gasketing - Surface			

Non-Secure Side


Hardware Set Notes:
Issue Comments:

 LO3: Latchbolt missing/damaged/incorrect application
 Issue Status: Non-Compliant

 LO6: Lock/strike fastener(s) stripped, missing or broken
 Issue Status: Non-Compliant

Opening Remarks:

30 Minute Temp Rise



O1



LO3-1



LO6-1

Building: 2

Level: 3

Mark: 2-300B

Room: STAIR 2

Description: 3' 0" x 7' 0" x 1 3/4" WD.F Wood 3 Piece Hollow Metal 90

Issue Codes: **F9**

Secure Side


Hardware Set #: 55.10.71.4MOWS

Qty	Type	Description	Part Description	Finish	Power	Manufacturer
3	Hinge		Full Mortise - Heavy - 4-1/2"x4-1/2" - 5K			
1	Lockset		Cylindrical - Non-Electrified - Ent/Off (F04) - Interconnecting - Lever - Knob Issue Code: LO1,LO3			
1	Closer		Surface - Push Side - Parallel - Thru Bolts Issue Code: OT			
1	Stop		Wall Stops - Wall Stop			
1	Gasketing		Perimeter Gasketing - Surface			

Non-Secure Side


Hardware Set Notes:
Issue Comments:

- F9: Improper field modification or repair
Issue Status: Non-Compliant
- LO1: Lock missing/damaged/not securely fastened
Issue Status: Non-Compliant
- LO3: Latchbolt missing/damaged/incorrect application
Issue Status: Non-Compliant
- OT: Other
Comments: Excessive latch speed - door slams
Issue Status: Non-Compliant

Opening Remarks:

30 Minute Temp Rise





Building: 2

Level: 3

Mark: 2-304A

Room: MEN'S

Description: 3' 0" x 7' 0" x 1 3/4" WD.F Wood 3 Piece Hollow Metal 20

Hardware Set #: 55.99.31.KPNS

Secure Side



Qty	Type	Description	Part Description	Finish	Power	Manufacturer
3	Hinge		Full Mortise - Heavy - 4-1/2"x4-1/2" - 5K			
1	Push/Pull		Push - Push Plates			
1	Push/Pull		Pull - Pull Plates			
1	Closer		Surface - Push Side - Parallel			
1	Plate		Plates - Kick Plate - Heavy Bevel			

Hardware Set Notes:

Non-Secure Side



Issue Comments:

Opening Remarks:



O1

Building: 2

Level: 3

Mark: 2-305A

Room: ELEC ROOM

Description: 2' 8" x 7' 0" x 1 3/4" WD.F Wood 3 Piece Hollow Metal 20

Issue Codes: **F8, F9**

Secure Side


Hardware Set #: 55.04.71.4NS

Qty	Type	Description	Part Description	Finish	Power	Manufacturer
3	Hinge		Full Mortise - Heavy - 4-1/2"x4-1/2" - 5K			
1	Lockset		Cylindrical - Non-Electrified - Store (F86) - Knob			
1	Closer		Surface - Push Side - Parallel			

Hardware Set Notes:

Non-Secure Side


Issue Comments:

F8: Unused fastener holes/wrong frame prep
 Comments: Missing Strike
 Issue Status: Non-Compliant

F9: Improper field modification or repair
 Issue Status: Non-Compliant

Opening Remarks:


O1



O2



O3



O4



O5



F8-1



F9-1

Building: 2

Level: 3

Mark: 2-306A

Room: WOMEN'S

Description: 3' 0" x 7' 0" x 1 3/4" WD.F Wood 3 Piece Hollow Metal 20

Secure Side


Hardware Set #: 55.99.31.KPNS

Qty	Type	Description	Part Description	Finish	Power	Manufacturer
3	Hinge		Full Mortise - Heavy - 4-1/2"x4-1/2" - 5K			
1	Push/Pull		Push - Push Plates			
1	Push/Pull		Pull - Pull Plates			
1	Closer		Surface - Push Side - Parallel			
1	Plate		Plates - Kick Plate - Heavy Bevel			

Non-Secure Side


Hardware Set Notes:
Issue Comments:
Opening Remarks:



Building: 2

Level: 3

Mark: 2-307A

Room: JANITOR

Description: 3' 0" x 7' 0" x 1 3/4" WD.F Wood 3 Piece Hollow Metal 20

Secure Side

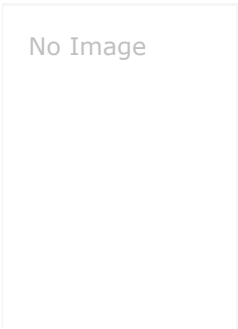


Hardware Set #: 55.04.50.4NS

Qty	Type	Description	Part Description	Finish	Power	Manufacturer
3	Hinge		Full Mortise - Heavy - 4-1/2"x4-1/2" - 5K			
1	Lockset		Cylindrical - Non-Electrified - Store (F86) - Knob			

Hardware Set Notes:

Non-Secure Side



Issue Comments:

Opening Remarks:

Building: 2

Level: 3

Mark: 2-313A

Room: CONFERENCE ROOM

Description: 3' 0" x 7' 10" x 1 3/4" WD.F Wood 3 Piece Hollow Metal

Secure Side

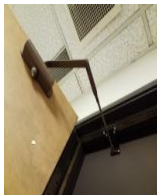

Hardware Set #: 55.05.61.4SNS

Qty	Type	Description	Part Description	Finish	Power	Manufacturer
4	Hinge		Full Mortise - Heavy - 4-1/2"x4-1/2" - 5K			
1	Lockset		Cylindrical - Non-Electrified - Passage (F75) - Lever			
1	Lockset		Deadbolt - Cylindrical - Cylinder x thumbturn			
1	Closer		Surface - Push Side - Parallel			
1	Gasketing		Perimeter Gasketing - Surface			

Non-Secure Side


Hardware Set Notes:
Issue Comments:
Opening Remarks:


01



02



03

Building: 2

Level: 3

Mark: 2-315A

Room: MAIL ROOM

Description: 3' 0" x 8' 10" x 1 3/4" WD.F Wood 3 Piece Hollow Metal 20

Secure Side


Hardware Set #: 55.95.61.4SNS

Qty	Type	Description	Part Description	Finish	Power	Manufacturer
4	Hinge		Full Mortise - Heavy - 4-1/2"x4-1/2" - 5K			
1	Lockset		Cylindrical - Non-Electrified - Passage (F75) - Lever			
1	Closer		Surface - Push Side - Parallel			
1	Gasketing		Perimeter Gasketing - Surface			

Hardware Set Notes:

Non-Secure Side


Issue Comments:
Opening Remarks:


O1



O2

Building: 2

Level: 3

Mark: 2-317A

Room: OFFICE

Description: 3' 0" x 8' 10" x 1 3/4" WD.F Wood 3 Piece Hollow Metal 20

Secure Side


Hardware Set #: 55.05.61.4SNS-1

Qty	Type	Description	Part Description	Finish	Power	Manufacturer
4	Hinge		Full Mortise - Heavy - 4-1/2"x4-1/2" - 5K			
1	Lockset		Cylindrical - Non-Electrified - Ent/Off (F109) - Lever			
1	Closer		Surface - Push Side - Parallel			
1	Gasketing		Perimeter Gasketing - Surface			

Hardware Set Notes:

Non-Secure Side


Issue Comments:
Opening Remarks:


O1



O2



O3



Building: 2

Level: 3

Mark: 2-318A

Room: CIRCULATION

Description: 3' 0" x 8' 10" x 1 3/4" WD.F Wood 3 Piece Hollow Metal

Hardware Set #: 55.05.61.4SNS-1

Secure Side



Qty	Type	Description	Part Description	Finish	Power	Manufacturer
4	Hinge		Full Mortise - Heavy - 4-1/2"x4-1/2" - 5K			
1	Lockset		Cylindrical - Non-Electrified - Ent/Off (F109) - Lever			
1	Closer		Surface - Push Side - Parallel			
1	Gasketing		Perimeter Gasketing - Surface			

Hardware Set Notes:

Non-Secure Side



Issue Comments:

Opening Remarks:



Building: 2

Level: 3

Mark: 2-319A

Room: OFFICE

Description: 3' 0" x 8' 10" x 1 3/4" WD.F Wood 3 Piece Hollow Metal

Hardware Set #: 55.05.61.4SNS-1

Secure Side



Qty	Type	Description	Part Description	Finish	Power	Manufacturer
4	Hinge		Full Mortise - Heavy - 4-1/2"x4-1/2" - 5K			
1	Lockset		Cylindrical - Non-Electrified - Ent/Off (F109) - Lever			
1	Closer		Surface - Push Side - Parallel			
1	Gasketing		Perimeter Gasketing - Surface			

Hardware Set Notes:

Non-Secure Side



Issue Comments:

Opening Remarks:



O1



Building: 2

Level: 3

Mark: 2-320A

Room: OFFICE

Description: 3' 0" x 8' 10" x 1 3/4" WD.F Wood 3 Piece Hollow Metal

Hardware Set #: 55.05.61.4SNS-1

Secure Side



Qty	Type	Description	Part Description	Finish	Power	Manufacturer
4	Hinge		Full Mortise - Heavy - 4-1/2"x4-1/2" - 5K			
1	Lockset		Cylindrical - Non-Electrified - Ent/Off (F109) - Lever			
1	Closer		Surface - Push Side - Parallel			
1	Gasketing		Perimeter Gasketing - Surface			

Hardware Set Notes:

Non-Secure Side



Issue Comments:

Opening Remarks:



Building: 2

Level: 3

Mark: 2-321A

Room: WORKSPACE CONFERENCE

Description: 3' 0" x 8' 10" x 1 3/4" WD.F Wood 3 Piece Hollow Metal

Hardware Set #: 55.05.50.4SNS

Secure Side



Qty	Type	Description	Part Description	Finish	Power	Manufacturer
4	Hinge		Full Mortise - Heavy - 4-1/2"x4-1/2" - 5K			
1	Lockset		Cylindrical - Non-Electrified - Passage (F75) - Lever			
1	Lockset		Deadbolt - Cylindrical - Cylinder x thumbturn			
1	Gasketing		Perimeter Gasketing - Surface			

Hardware Set Notes:

Non-Secure Side



Issue Comments:

Opening Remarks:



Building: 2

Level: 3

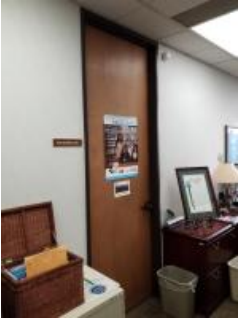
Mark: 2-322A

Room: OFFICE

Description: 3' 0" x 8' 10" x 1 3/4" WD.F Wood 3 Piece Hollow Metal

Hardware Set #: 55.05.61.4SNS-2

Secure Side



Qty	Type	Description	Part Description	Finish	Power	Manufacturer
4	Hinge		Full Mortise - Heavy - 4-1/2"x4-1/2" - 5K			
1	Lockset		Cylindrical - Non-Electrified - Ent/Off (F109) - Lever			
1	Closer		Surface - Push Side - Parallel			
1	Gasketing		Perimeter Gasketing - Surface			

Hardware Set Notes:

Non-Secure Side



Issue Comments:

Opening Remarks:

Building: 2

Level: 3

Mark: 2-330A

Room: CORRIDOR

Description: 6' 0" x 8' 10" x 1 3/4" WD.F Wood 3 Piece Hollow Metal

Secure Side


Hardware Set #: 55.93.21.4

Qty	Type	Description	Part Description	Finish	Power	Manufacturer
8	Hinge		Full Mortise - Heavy - 4-1/2"x4-1/2" - 5K			
2	Push/Pull		Pull - Lever Issue Code: PP1			
2	Closer		Surface - Push Side - Parallel			
2	Stop		Kickdown Door Stop			

Hardware Set Notes:

Non-Secure Side


Issue Comments:

H1: Missing hinge(s)/pivot
 Comments: 2 Hinges missing
 Issue Status: Non-Compliant

PP1: Missing/damaged/broken/installed incorrectly
 Issue Status: Non-Compliant

Opening Remarks:


H1-1



PP1-1

Building: 2

Level: 3

Mark: 2-331A

Room: OFFICE

Description: 3' 0" x 8' 10" x 1 3/4" WD.F Wood 3 Piece Hollow Metal 20

Issue Codes: **F8**

Secure Side


Hardware Set #: 55.05.61.4SNS

Qty	Type	Description	Part Description	Finish	Power	Manufacturer
4	Hinge		Full Mortise - Heavy - 4-1/2"x4-1/2" - 5K			
1	Lockset		Cylindrical - Non-Electrified - Passage (F75) - Lever			
1	Lockset		Deadbolt - Cylindrical - Cylinder x thumbturn			
1	Closer		Surface - Push Side - Parallel			
1	Gasketing		Perimeter Gasketing - Surface			

Non-Secure Side


Hardware Set Notes:
Issue Comments:

F8: Unused fastener holes/wrong frame prep
 Comments: missing strike plate
 Issue Status: Non-Compliant

Opening Remarks:




Building: 2

Level: 3

Mark: 2-335A

Room: OFFICE

Description: 3' 0" x 8' 10" x 1 3/4" WD.F Wood 3 Piece Hollow Metal

Hardware Set #: 55.05.50.4NS

Secure Side



Qty	Type	Description	Part Description	Finish	Power	Manufacturer
2	Hinge		Full Mortise - Heavy - 4-1/2"x4-1/2" - 5K			
1	Lockset		Cylindrical - Non-Electrified - Ent/Off (F109) - Lever			

Hardware Set Notes:

Non-Secure Side



Issue Comments:

Opening Remarks:

Building: 2

Level: 3

Mark: 2-337A

Room: CORRIDOR

Description: 3' 0" x 8' 10" x 1 3/4" WD.F Wood 3 Piece Hollow Metal 20

Issue Codes: **D2**

Secure Side


Hardware Set #: 55.95.61.4SNS

Qty	Type	Description	Part Description	Finish	Power	Manufacturer
4	Hinge		Full Mortise - Heavy - 4-1/2"x4-1/2" - 5K			
1	Lockset		Cylindrical - Non-Electrified - Passage (F75) - Lever			
1	Closer		Surface - Push Side - Parallel			
1	Gasketing		Perimeter Gasketing - Surface			

Non-Secure Side


Hardware Set Notes:
Issue Comments:

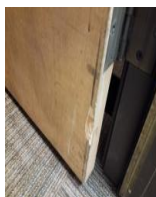
 D2: Door damaged (bent, dented, delaminating)
 Issue Status: Non-Compliant

Opening Remarks:


O1



D2-1



D2-2

Building: 2

Level: 3

Mark: 2-338A

Room: BREAK ROOM

Description: 3' 0" x 7' 0" x 1 3/4" WD.F Wood WD Wood

Secure Side



Hardware Set #: 85.95.50

Qty	Type	Description	Part Description	Finish	Power	Manufacturer
1	Push/Pull		Pull - Pocket Pull			

Hardware Set Notes:

Non-Secure Side



Issue Comments:

Opening Remarks:



O1



O2



O3



Building: 2

Level: 3

Mark: 2-340A

Room: OFFICE

Description: 3' 0" x 8' 10" x 1 3/4" WD.F Wood 3 Piece Hollow Metal

Secure Side

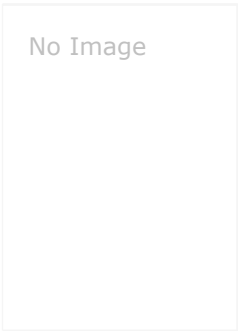


Hardware Set #: 55.05.50.4NS-1

Qty	Type	Description	Part Description	Finish	Power	Manufacturer
4	Hinge		Full Mortise - Heavy - 4-1/2"x4-1/2" - 5K			
1	Lockset		Cylindrical - Non-Electrified - Passage (F75) - Lever			
1	Lockset		Deadbolt - Cylindrical - Cylinder x thumbturn			

Hardware Set Notes:

Non-Secure Side



Issue Comments:

Opening Remarks:



Building: 2

Level: 3

Mark: 2-341A

Room: OFFICE

Description: 3' 0" x 8' 10" x 1 3/4" WD.F Wood 3 Piece Hollow Metal

Hardware Set #: 55.05.50.4NS-1

Secure Side



Qty	Type	Description	Part Description	Finish	Power	Manufacturer
4	Hinge		Full Mortise - Heavy - 4-1/2"x4-1/2" - 5K			
1	Lockset		Cylindrical - Non-Electrified - Passage (F75) - Lever			
1	Lockset		Deadbolt - Cylindrical - Cylinder x thumbturn			

Hardware Set Notes:

Non-Secure Side



Issue Comments:

Opening Remarks:



Building: 2

Level: 3

Mark: 2-342A

Room: OFFICE

Description: 3' 0" x 8' 10" x 1 3/4" WD.F Wood 3 Piece Hollow Metal

Hardware Set #: 55.05.50.4NS-1

Secure Side



Qty	Type	Description	Part Description	Finish	Power	Manufacturer
4	Hinge		Full Mortise - Heavy - 4-1/2"x4-1/2" - 5K			
1	Lockset		Cylindrical - Non-Electrified - Passage (F75) - Lever			
1	Lockset		Deadbolt - Cylindrical - Cylinder x thumbturn			

Hardware Set Notes:

Non-Secure Side



Issue Comments:

Opening Remarks:

Building: 2

Level: 3

Mark: 2-346B

Room: TRAFFIC CONTROL ROOM

Description: 5' 4" x 8' 10" x 1 3/4" WD.F Wood 3 Piece Hollow Metal No Label Access

Secure Side


Hardware Set #: 55.93.21.4HS

Qty	Type	Description	Part Description	Finish	Power	Manufacturer
8	Hinge		Full Mortise - Heavy - 4-1/2"x4-1/2" - 5K			
4	Push/Pull		Pull - Lever			
2	Closer		Surface - Push Side - Parallel			
1	Gasketing		Perimeter Gasketing - Surface			
1	Electronic Accessory		Mag Hold Issue Code: EA2			

Non-Secure Side


Hardware Set Notes:
Issue Comments:

 EA2: Not connected/commissioned
 Issue Status: Non-Compliant

Opening Remarks:


EA2-1



EA2-2

Building: 2

Level: 4

Mark: 2-400A

Room: STAIR 1

Description: 3' 0" x 7' 0" x 1 3/4" WD.F Wood 3 Piece Hollow Metal None

Issue Codes: **F9, OT**

Secure Side


Hardware Set #: 55.10.71.4MOWS

Qty	Type	Description	Part Description	Finish	Power	Manufacturer
3	Hinge		Full Mortise - Heavy - 4-1/2"x4-1/2" - 5K			
1	Lockset		Cylindrical - Non-Electrified - Ent/Off (F04) - Interconnecting - Lever - Knob			
1	Closer		Surface - Push Side - Parallel - Thru Bolts			
1	Stop		Wall Stops - Wall Stop			
1	Gasketing		Perimeter Gasketing - Surface			

Non-Secure Side


Hardware Set Notes:
Issue Comments:

 F9: Improper field modification or repair
 Issue Status: Non-Compliant

OT: Other

 Comments: door is not rated
 Issue Status: Non-Compliant

Opening Remarks:

Door should be rated



01



02



03



04



OT-1



F9-1

Building: 2

Level: 4

Mark: 2-400B

Room: STAIR 2

Description: 3' 0" x 7' 0" x 1 3/4" WD.F Wood 3 Piece Hollow Metal 90

Issue Codes: **F9**

Secure Side


Hardware Set #: 55.10.71.4SMOEGWS

Qty	Type Description	Part Description	Finish	Power	Manufacturer
3	Hinge	Full Mortise - Heavy - 4-1/2"x4-1/2" - 5K			
1	Lockset	Cylindrical - Non-Electrified - Ent/Off (F04) - Interconnecting - Lever - Knob			
1	Closer	Surface - Push Side - Parallel - Thru Bolts			
1	Plate	Guards - Latch Protectors			
1	Stop	Wall Stops - Wall Stop			
1	Gasketing	Perimeter Gasketing - Surface			

Non-Secure Side


Hardware Set Notes:
Issue Comments:

 F9: Improper field modification or repair
 Issue Status: Non-Compliant

Opening Remarks:


O1



O2



O3



O4



F9-1

Building: 2

Level: 4

Mark: 2-405A

Room: ELECT. ROOM

Description: 2' 8" x 7' 0" x 1 3/4" WD.F Wood 3 Piece Hollow Metal 20

Issue Codes: **F8**

Secure Side

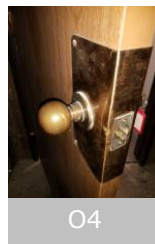
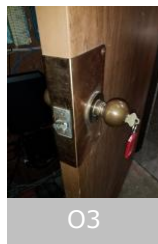

Hardware Set #: 55.04.71.4EGNS

Qty	Type	Description	Part Description	Finish	Power	Manufacturer
3	Hinge		Full Mortise - Heavy - 4-1/2"x4-1/2" - 5K			
1	Lockset		Cylindrical - Non-Electrified - Store (F86) - Knob			
1	Closer		Surface - Push Side - Parallel			
1	Plate		Guards - Latch Protectors			

Non-Secure Side


Hardware Set Notes:
Issue Comments:

F8: Unused fastener holes/wrong frame prep
 Comments: non compliant material
 Issue Status: Non-Compliant

Opening Remarks:


Building: 2

Level: 4

Mark: 2-408A

Room: BREAK ROOM

Description: 3' 0" x 8' 10" x 1 3/4" WD.F Wood 3 Piece Hollow Metal 20

Hardware Set #: 55.05.71.4SKPNS

Secure Side



Qty	Type	Description	Part Description	Finish	Power	Manufacturer
4	Hinge		Full Mortise - Heavy - 4-1/2"x4-1/2" - 5K - Ball Bearing			
1	Lockset		Cylindrical - Non-Electrified - Ent/Off (F109) - Lever			
1	Closer		Surface - Push Side - Parallel			
1	Plate		Plates - Kick Plate			

Hardware Set Notes:

Non-Secure Side


Issue Comments:
Opening Remarks:


O1



O2



O3



Building: 2

Level: 4

Mark: 2-411A

Room: OFFICE

Description: 3' 0" x 8' 10" x 1 3/4" WD.F Wood HM.LSL Hollow Metal

Hardware Set #: 55.05.50.4WS Lever

Secure Side



Qty	Type	Description	Part Description	Finish	Power	Manufacturer
4	Hinge		Full Mortise - Heavy - 4-1/2"x4-1/2" - 5K			
1	Lockset		Cylindrical - Non-Electrified - Ent/Off (F109) - Lever			
1	Stop		Wall Stops - Wall Stop			

Hardware Set Notes:

Non-Secure Side



Issue Comments:

Opening Remarks:



Building: 2

Level: 4

Mark: 2-412A

Room: OFFICE

Description: 3' 0" x 8' 10" x 1 3/4" WD.F Wood HM.RSL Hollow Metal

Hardware Set #: 55.05.50.4WS Lever

Secure Side



Qty	Type	Description	Part Description	Finish	Power	Manufacturer
4	Hinge		Full Mortise - Heavy - 4-1/2"x4-1/2" - 5K			
1	Lockset		Cylindrical - Non-Electrified - Ent/Off (F109) - Lever			
1	Stop		Wall Stops - Wall Stop			

Hardware Set Notes:

Non-Secure Side



Issue Comments:

Opening Remarks:

Building: 2

Level: 4

Mark: 2-413A

Room: OFFICE

Description: 3' 0" x 8' 10" x 1 3/4" WD.F Wood 3 Piece Hollow Metal

Hardware Set #: 55.05.50.4WS Lever

Secure Side



Qty	Type	Description	Part Description	Finish	Power	Manufacturer
4	Hinge		Full Mortise - Heavy - 4-1/2"x4-1/2" - 5K			
1	Lockset		Cylindrical - Non-Electrified - Ent/Off (F109) - Lever			
1	Stop		Wall Stops - Wall Stop			

Hardware Set Notes:

Non-Secure Side



Issue Comments:

Opening Remarks:



Building: 2

Level: 4

Mark: 2-414A

Room: CONFERENCE ROOM

Description: 3' 0" x 8' 10" x 1 3/4" WD.F Wood 3 Piece Hollow Metal 20

Hardware Set #: 55.37.71.4SWS-1

Secure Side



Qty	Type	Description	Part Description	Finish	Power	Manufacturer
4	Hinge		Full Mortise - Heavy - 4-1/2"x4-1/2" - 5K - Ball Bearing			
1	Lockset		Cylindrical - Non-Electrified - Class (F84) - Lever			
1	Closer		Surface - Push Side - Parallel			
1	Stop		Wall Stops - Wall Stop			
1	Gasketing		Perimeter Gasketing - Surface			

Non-Secure Side



Hardware Set Notes:

Issue Comments:

Opening Remarks:



O1



O2

Building: 2

Level: 4

Mark: 2-414B

Room: CONFERENCE ROOM

Description: 3' 0" x 8' 10" x 1 3/4" WD.F Wood 3 Piece Hollow Metal

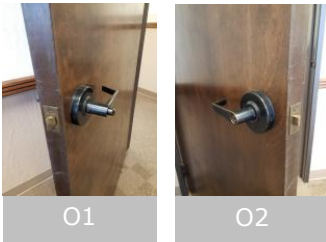
Secure Side


Hardware Set #: 55.05.50.4NS

Qty	Type	Description	Part Description	Finish	Power	Manufacturer
2	Hinge		Full Mortise - Heavy - 4-1/2"x4-1/2" - 5K			
1	Lockset		Cylindrical - Non-Electrified - Ent/Off (F109) - Lever			

Hardware Set Notes:

Non-Secure Side


Issue Comments:
Opening Remarks:


Building: 2

Level: 4

Mark: 2-415A

Room: OFFICE

Description: 3' 0" x 8' 10" x 1 3/4" WD.F Wood 3 Piece Hollow Metal

Secure Side



Hardware Set #: 55.05.50.4NS

Qty	Type	Description	Part Description	Finish	Power	Manufacturer
2	Hinge		Full Mortise - Heavy - 4-1/2"x4-1/2" - 5K			
1	Lockset		Cylindrical - Non-Electrified - Ent/Off (F109) - Lever			

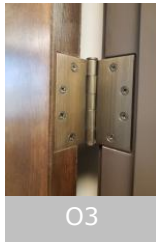
Hardware Set Notes:

Non-Secure Side



Issue Comments:

Opening Remarks:





Building: 2

Level: 4

Mark: 2-416A

Room: OFFICE

Description: 3' 0" x 8' 10" x 1 3/4" WD.F Wood 3 Piece Hollow Metal

Secure Side



Hardware Set #: 55.05.50.4NS

Qty	Type	Description	Part Description	Finish	Power	Manufacturer
2	Hinge		Full Mortise - Heavy - 4-1/2"x4-1/2" - 5K			
1	Lockset		Cylindrical - Non-Electrified - Ent/Off (F109) - Lever			

Hardware Set Notes:

Non-Secure Side



Issue Comments:

Opening Remarks:



Building: 2

Level: 4

Mark: 2-417A

Room: OFFICE

Description: 3' 0" x 8' 10" x 1 3/4" WD.F Wood 3 Piece Hollow Metal

Secure Side



Hardware Set #: 55.05.50.4NS

Qty	Type	Description	Part Description	Finish	Power	Manufacturer
2	Hinge		Full Mortise - Heavy - 4-1/2"x4-1/2" - 5K			
1	Lockset		Cylindrical - Non-Electrified - Ent/Off (F109) - Lever			

Hardware Set Notes:

Non-Secure Side



Issue Comments:

Opening Remarks:



Building: 2

Level: 4

Mark: 2-418A

Room: OFFICE

Description: 3' 0" x 8' 10" x 1 3/4" WD.F Wood 3 Piece Hollow Metal

Secure Side



Hardware Set #: 55.05.50.4NS

Qty	Type	Description	Part Description	Finish	Power	Manufacturer
2	Hinge		Full Mortise - Heavy - 4-1/2"x4-1/2" - 5K			
1	Lockset		Cylindrical - Non-Electrified - Ent/Off (F109) - Lever			

Hardware Set Notes:

Non-Secure Side



Issue Comments:

Opening Remarks:



Building: 2

Level: 4

Mark: 2-421A

Room: PROJECT CONFERENCE ROOM

Description: 3' 0" x 8' 10" x 1 3/4" WD.F Wood 3 Piece Hollow Metal

Hardware Set #: 55.05.50.4WS Lever

Secure Side



Qty	Type	Description	Part Description	Finish	Power	Manufacturer
4	Hinge		Full Mortise - Heavy - 4-1/2"x4-1/2" - 5K			
1	Lockset		Cylindrical - Non-Electrified - Ent/Off (F109) - Lever Issue Code: LO1			
1	Stop		Wall Stops - Wall Stop			

Hardware Set Notes:

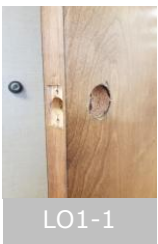
Non-Secure Side



Issue Comments:

LO1: Lock missing/damaged/not securely fastened
Comments: Missing
Issue Status: Non-Compliant

Opening Remarks:





Building: 2

Level: 4

Mark: 2-422A

Room: OFFICE

Description: 3' 0" x 8' 10" x 1 3/4" WD.F Wood 3 Piece Hollow Metal

Hardware Set #: 55.05.50.4WS Lever

Secure Side



Qty	Type	Description	Part Description	Finish	Power	Manufacturer
4	Hinge		Full Mortise - Heavy - 4-1/2"x4-1/2" - 5K			
1	Lockset		Cylindrical - Non-Electrified - Ent/Off (F109) - Lever			
1	Stop		Wall Stops - Wall Stop			

Hardware Set Notes:

Non-Secure Side



Issue Comments:

Opening Remarks:

Building: 2

Level: 4

Mark: 2-423A

Room: CORRIDOR

Description: 3' 0" x 8' 10" x 1 3/4" WD.F Wood 3 Piece Hollow Metal 20

Secure Side


Hardware Set #: 55.37.71.4SWS-1

Qty	Type	Description	Part Description	Finish	Power	Manufacturer
4	Hinge		Full Mortise - Heavy - 4-1/2"x4-1/2" - 5K - Ball Bearing			
1	Lockset		Cylindrical - Non-Electrified - Class (F84) - Lever			
1	Closer		Surface - Push Side - Parallel			
1	Stop		Wall Stops - Wall Stop			
1	Gasketing		Perimeter Gasketing - Surface			

Non-Secure Side


Hardware Set Notes:
Issue Comments:
Opening Remarks:


01



02



03



04



Building: 2

Level: 4

Mark: 2-425A

Room: PROJECT CONFERENCE ROOM

Description: 3' 0" x 8' 10" x 1 3/4" WD.F Wood 3 Piece Hollow Metal

Hardware Set #: 55.05.50.4WS Lever

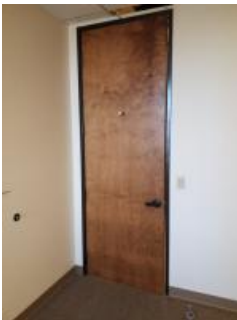
Secure Side



Qty	Type	Description	Part Description	Finish	Power	Manufacturer
4	Hinge		Full Mortise - Heavy - 4-1/2"x4-1/2" - 5K			
1	Lockset		Cylindrical - Non-Electrified - Ent/Off (F109) - Lever			
1	Stop		Wall Stops - Wall Stop			

Hardware Set Notes:

Non-Secure Side



Issue Comments:

Opening Remarks:



O1

Building: 2

Level: 4

Mark: 2-426A

Room: OPEN OFFICE

Description: 3' 0" x 8' 10" x 1 3/4" WD.F Wood 3 Piece Hollow Metal 20

Hardware Set #: 55.37.71.4SWS-2

Secure Side



Qty	Type	Description	Part Description	Finish	Power	Manufacturer
4	Hinge		Full Mortise - Heavy - 4-1/2"x4-1/2" - 5K			
1	Lockset		Cylindrical - Electrified - Fail Secure - Lever			
1	Closer		Surface - Push Side - Parallel			
1	Stop		Wall Stops - Wall Stop			

Hardware Set Notes:

Non-Secure Side


Issue Comments:
Opening Remarks:


01



02



03

Building: 2

Level: 4

Mark: 2-431A

Room: OFFICE

Description: 3' 0" x 8' 10" x 1 3/4" WD.F Wood 3 Piece Hollow Metal

Secure Side


Hardware Set #: 55.95.50.WS

Qty	Type	Description	Part Description	Finish	Power	Manufacturer
3	Hinge		Full Mortise - Standard - 3-1/2"x3-1/2" - 5K			
1	Lockset		Cylindrical - Non-Electrified - Passage (F75) - Lever			
1	Stop		Wall Stops - Wall Stop			

Hardware Set Notes:

Non-Secure Side


Issue Comments:
Opening Remarks:


01

Building: 2

Level: 4

Mark: 2-435A

Room: CIRCULATION

Description: 3' 0" x 8' 10" x 1 3/4" WD.F Wood 3 Piece Hollow Metal

Secure Side


Hardware Set #: 55.05.50.4WS Lever

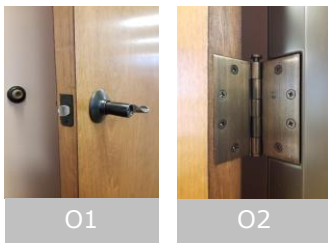
Qty	Type	Description	Part Description	Finish	Power	Manufacturer
4	Hinge		Full Mortise - Heavy - 4-1/2"x4-1/2" - 5K			
1	Lockset		Cylindrical - Non-Electrified - Ent/Off (F109) - Lever			
1	Stop		Wall Stops - Wall Stop			

Hardware Set Notes:

Non-Secure Side


Issue Comments:
Opening Remarks:

Decorative Lever



O1

O2



Building: 2

Level: 4

Mark: 2-436A

Room: CIRCULATION

Description: 3' 0" x 8' 10" x 1 3/4" WD.F Wood HM.LSL Hollow Metal

Hardware Set #: 55.05.50.4WS Lever

Secure Side



Qty	Type	Description	Part Description	Finish	Power	Manufacturer
4	Hinge		Full Mortise - Heavy - 4-1/2"x4-1/2" - 5K			
1	Lockset		Cylindrical - Non-Electrified - Ent/Off (F109) - Lever			
1	Stop		Wall Stops - Wall Stop			

Hardware Set Notes:

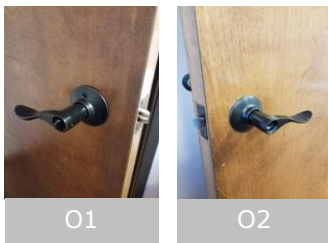
Non-Secure Side



Issue Comments:

Opening Remarks:

Decorative Lever



Building: 2

Level: 5

Mark: 2-500A

Room: STAIR 1

Description: 3' 0" x 7' 0" x 1 3/4" WD.F Wood 3 Piece Hollow Metal 90

Issue Codes: **F9**

Secure Side


Hardware Set #: 55.10.71.4MOWS

Qty	Type	Description	Part Description	Finish	Power	Manufacturer
3	Hinge		Full Mortise - Heavy - 4-1/2"x4-1/2" - 5K			
1	Lockset		Cylindrical - Non-Electrified - Ent/Off (F04) - Interconnecting - Lever - Knob Issue Code: LO1			
1	Closer		Surface - Push Side - Parallel - Thru Bolts			
1	Stop		Wall Stops - Wall Stop			
1	Gasketing		Perimeter Gasketing - Surface			

Non-Secure Side


Hardware Set Notes:
Issue Comments:

 F9: Improper field modification or repair
 Issue Status: Non-Compliant

 LO1: Lock missing/damaged/not securely fastened
 Issue Status: Non-Compliant

Opening Remarks:

30 min temp rise



O1



O2



O3



O4



LO1-1



LO1-2



F9-1

Building: 2

Level: 5

Mark: 2-500B

Room: STAIR 2

Description: 3' 0" x 7' 0" x 1 3/4" WD.F Wood 3 Piece Hollow Metal 90

Issue Codes: **F9**

Secure Side


Hardware Set #: 55.10.71.4SMOEGWS

Qty	Type Description	Part Description	Finish	Power	Manufacturer
3	Hinge	Full Mortise - Heavy - 4-1/2"x4-1/2" - 5K			
1	Lockset	Cylindrical - Non-Electrified - Ent/Off (F04) - Interconnecting - Lever - Knob			
1	Closer	Surface - Push Side - Parallel - Thru Bolts			
1	Plate	Guards - Latch Protectors			
1	Stop	Wall Stops - Wall Stop			
1	Gasketing	Perimeter Gasketing - Surface			

Non-Secure Side


Hardware Set Notes:
Issue Comments:

 F9: Improper field modification or repair
 Issue Status: Non-Compliant

Opening Remarks:


O1



O2



F9-1



F9-2



Building: 2

Level: 5

Mark: 2-504A

Room: MEN'S

Description: 3' 0" x 7' 0" x 1 3/4" WD.F Wood 3 Piece Hollow Metal 20

Hardware Set #: 55.95.71.4SWS

Secure Side



Qty	Type	Description	Part Description	Finish	Power	Manufacturer
3	Hinge		Full Mortise - Heavy - 4-1/2"x4-1/2" - 5K - Ball Bearing			
1	Lockset		Cylindrical - Non-Electrified - Passage (F75) - Lever			
1	Closer		Surface - Push Side - Parallel			
1	Stop		Wall Stops - Wall Stop			
1	Gasketing		Perimeter Gasketing - Surface			

Non-Secure Side



Hardware Set Notes:

Issue Comments:

Opening Remarks:

Building: 2

Level: 5

Mark: 2-505A

Room: ELECT. ROOM

Description: 2' 8" x 7' 0" x 1 3/4" WD.F Wood 3 Piece Hollow Metal None

Issue Codes: **F8**

Secure Side


Hardware Set #: 55.04.71.SAP

Qty	Type	Description	Part Description	Finish	Power	Manufacturer
3	Hinge		Full Mortise - Heavy - 4-1/2"x4-1/2" - 5K			
1	Lockset		Cylindrical - Non-Electrified - Store (F86) - Knob			
1	Plate		Guards - Latch Protectors - Aluminum			
1	Gasketing		Perimeter Gasketing - Surface Issue Code: GA1			

Non-Secure Side


Hardware Set Notes:
Issue Comments:

 F8: Unused fastener holes/wrong frame prep
 Issue Status: Non-Compliant

 GA1: Gasketing/smoke seal missing/damaged/installed incorrectly
 Comments: mostly missing
 Issue Status: Non-Compliant

Opening Remarks:


O1



O2



O3



GA1-1



GA1-2



F8-1



F8-2

Building: 2

Level: 5

Mark: 2-506A

Room: WOMEN'S

Description: 3' 0" x 7' 0" x 1 3/4" WD.F Wood 3 Piece Hollow Metal 20

Secure Side


Hardware Set #: 55.95.71.4SWS

Qty	Type	Description	Part Description	Finish	Power	Manufacturer
3	Hinge		Full Mortise - Heavy - 4-1/2"x4-1/2" - 5K - Ball Bearing			
1	Lockset		Cylindrical - Non-Electrified - Passage (F75) - Lever			
1	Closer		Surface - Push Side - Parallel			
1	Stop		Wall Stops - Wall Stop			
1	Gasketing		Perimeter Gasketing - Surface			

Non-Secure Side


Hardware Set Notes:
Issue Comments:
Opening Remarks:


O1



O2

Building: 2

Level: 5

Mark: 2-507A

Room: JANITOR

Description: 3' 0" x 7' 0" x 1 3/4" WD.F Wood 3 Piece Hollow Metal 20

Secure Side


Hardware Set #: 55.95.71.4SWS

Qty	Type	Description	Part Description	Finish	Power	Manufacturer
3	Hinge		Full Mortise - Heavy - 4-1/2"x4-1/2" - 5K - Ball Bearing			
1	Lockset		Cylindrical - Non-Electrified - Passage (F75) - Lever			
1	Closer		Surface - Push Side - Parallel			
1	Stop		Wall Stops - Wall Stop			
1	Gasketing		Perimeter Gasketing - Surface			

Non-Secure Side


Hardware Set Notes:
Issue Comments:
Opening Remarks:


O1

O2

O3



Building: 2

Level: 5

Mark: 2-509A

Room: STOR

Description: 3' 0" x 6' 11" x 1 3/4" WD.F.LOUV Wood 3 Piece Hollow Metal

Secure Side



Hardware Set #: 55.95.50.4NS

Qty	Type	Description	Part Description	Finish	Power	Manufacturer
3	Hinge		Full Mortise - Heavy - 4-1/2"x4-1/2" - 5K			
1	Lockset		Cylindrical - Non-Electrified - Passage (F75) - Lever			

Hardware Set Notes:

Non-Secure Side



Issue Comments:

Opening Remarks:

Building: 2

Level: 5

Mark: 2-513A

Room: OFFICE

Description: 3' 0" x 8' 10" x 1 3/4" WD.F Wood 3 Piece Hollow Metal

Secure Side


Hardware Set #: 55.95.50.WS.DS

Qty	Type	Description	Part Description	Finish	Power	Manufacturer
4	Hinge		Full Mortise - Heavy - 4-1/2"x4-1/2" - 5K			
1	Lockset		Cylindrical - Non-Electrified - Passage (F75) - Lever			
1	Stop		Wall Stops - Door Stop			

Hardware Set Notes:

Non-Secure Side


Issue Comments:
Opening Remarks:


O1



Building: 2

Level: 5

Mark: 2-513B

Room: STOR

Description: 3' 10" x 6' 5" x 3/4" WD.F Wood 3 Piece Hollow Metal

Hardware Set #: 55.94.00.3JNS

Secure Side



Qty	Type	Description	Part Description	Finish	Power	Manufacturer
8		Pivot	Pivot			
2		Push/Pull	Pull - Decorative Pull			
1		Coat Hook				

Hardware Set Notes:

Non-Secure Side



Issue Comments:

Opening Remarks:

Cabinet Storage





Building: 2

Level: 5

Mark: 2-514A

Room: OFFICE

Description: 3' 0" x 8' 10" x 1 3/4" WD.F Wood 3 Piece Hollow Metal

Hardware Set #: 55.95.50.WS.DS

Secure Side



Qty	Type	Description	Part Description	Finish	Power	Manufacturer
4	Hinge		Full Mortise - Heavy - 4-1/2"x4-1/2" - 5K			
1	Lockset		Cylindrical - Non-Electrified - Passage (F75) - Lever			
1	Stop		Wall Stops - Door Stop			

Hardware Set Notes:

Non-Secure Side



Issue Comments:

Opening Remarks:



Building: 2

Level: 5

Mark: 2-515A

Room: OFFICE

Description: 3' 0" x 8' 10" x 1 3/4" WD.F Wood 3 Piece Hollow Metal

Hardware Set #: 55.95.50.WS.DS

Secure Side



Qty	Type	Description	Part Description	Finish	Power	Manufacturer
4	Hinge		Full Mortise - Heavy - 4-1/2"x4-1/2" - 5K			
1	Lockset		Cylindrical - Non-Electrified - Passage (F75) - Lever			
1	Stop		Wall Stops - Door Stop			

Hardware Set Notes:

Non-Secure Side



Issue Comments:

Opening Remarks:



Building: 2

Level: 5

Mark: 2-517A

Room: OFFICE

Description: 3' 0" x 8' 10" x 1 3/4" WD.F Wood 3 Piece Hollow Metal

Hardware Set #: 55.95.50.WS.DS

Secure Side



Qty	Type	Description	Part Description	Finish	Power	Manufacturer
4	Hinge		Full Mortise - Heavy - 4-1/2"x4-1/2" - 5K			
1	Lockset		Cylindrical - Non-Electrified - Passage (F75) - Lever			
1	Stop		Wall Stops - Door Stop			

Hardware Set Notes:

Non-Secure Side



Issue Comments:

Opening Remarks:

Building: 2

Level: 5

Mark: 2-518A

Room: OFFICE

Description: 3' 0" x 8' 10" x 1 3/4" WD.F Wood 3 Piece Hollow Metal

Secure Side



Hardware Set #: 55.05.61.4SWS

Qty	Type	Description	Part Description	Finish	Power	Manufacturer
4	Hinge		Full Mortise - Heavy - 4-1/2"x4-1/2" - 5K			
1	Lockset		Cylindrical - Non-Electrified - Ent/Off (F109) - Lever			
1	Closer		Surface - Push Side - Parallel			
1	Stop		Wall Stops - Door Stop			
1	Gasketing		Perimeter Gasketing - Surface			

Non-Secure Side



Hardware Set Notes:

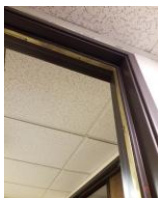
Issue Comments:

CL3: Missing/damaged/broken arm
 Comments: Disconnected
 Issue Status: Non-Compliant

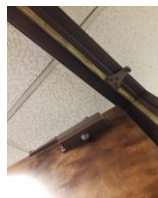
Opening Remarks:



O1



O2



CL3-1



Building: 2

Level: 5

Mark: 2-519A

Room: OFFICE

Description: 3' 0" x 8' 10" x 1 3/4" WD.F Wood 3 Piece Hollow Metal

Hardware Set #: 55.95.50.WS.DS

Secure Side



Qty	Type	Description	Part Description	Finish	Power	Manufacturer
4	Hinge		Full Mortise - Heavy - 4-1/2"x4-1/2" - 5K			
1	Lockset		Cylindrical - Non-Electrified - Passage (F75) - Lever			
1	Stop		Wall Stops - Door Stop			

Hardware Set Notes:

Non-Secure Side



Issue Comments:

Opening Remarks:



O1



Building: 2

Level: 5

Mark: 2-520A

Room: OFFICE

Description: 3' 0" x 8' 10" x 1 3/4" WD.F Wood 3 Piece Hollow Metal

Hardware Set #: 55.95.50.WS.DS

Secure Side



Qty	Type	Description	Part Description	Finish	Power	Manufacturer
4	Hinge		Full Mortise - Heavy - 4-1/2"x4-1/2" - 5K			
1	Lockset		Cylindrical - Non-Electrified - Passage (F75) - Lever			
1	Stop		Wall Stops - Door Stop			

Hardware Set Notes:

Non-Secure Side



Issue Comments:

Opening Remarks:



Building: 2

Level: 5

Mark: 2-521A

Room: CONFERENCE ROOM

Description: 3' 0" x 8' 10" x 1 3/4" WD.F Wood 3 Piece Hollow Metal

Hardware Set #: 55.95.50.WS.DS

Secure Side



Qty	Type	Description	Part Description	Finish	Power	Manufacturer
4	Hinge		Full Mortise - Heavy - 4-1/2"x4-1/2" - 5K			
1	Lockset		Cylindrical - Non-Electrified - Passage (F75) - Lever			
1	Stop		Wall Stops - Door Stop			

Hardware Set Notes:

Non-Secure Side



Issue Comments:

Opening Remarks:



Building: 2

Level: 3

Mark: 2-521B

Room: CONFERENCE ROOM

Description: 2' 8" x 7' 0" x 1 1/2" WD.F Wood WD Wood

Secure Side



Hardware Set #: 85.95.50

Qty	Type	Description	Part Description	Finish	Power	Manufacturer
1		Push/Pull	Pull - Pocket Pull			

Hardware Set Notes:

Non-Secure Side



Issue Comments:

Opening Remarks:



O1



Building: 2

Level: 5

Mark: 2-524A

Room: OFFICE

Description: 3' 0" x 8' 10" x 1 3/4" WD.F Wood 3 Piece Hollow Metal

Hardware Set #: 55.95.50.WS.DS

Secure Side



Qty	Type	Description	Part Description	Finish	Power	Manufacturer
4	Hinge		Full Mortise - Heavy - 4-1/2"x4-1/2" - 5K			
1	Lockset		Cylindrical - Non-Electrified - Passage (F75) - Lever			
1	Stop		Wall Stops - Door Stop			

Hardware Set Notes:

Non-Secure Side



Issue Comments:

Opening Remarks:



Building: 2

Level: 5

Mark: 2-526A

Room: CONFERENCE ROOM

Description: 3' 0" x 8' 10" x 1 3/4" WD.F Wood 3 Piece Hollow Metal 20

Hardware Set #: 55.0395.71.4SWS

Secure Side



Qty	Type	Description	Part Description	Finish	Power	Manufacturer
4	Hinge		Full Mortise - Heavy - 4-1/2"x4-1/2" - 5K			
1	Lockset		Cylindrical - Non-Electrified - Passage (F75) - Lever			
1	Lockset		Deadbolt - Cylindrical - Cylinder x thumbturn			
1	Closer		Surface - Push Side - Parallel			
1	Stop		Wall Stops - Door Stop			
1	Gasketing		Perimeter Gasketing - Surface			

Hardware Set Notes:

Non-Secure Side



Issue Comments:

Opening Remarks:



O1



Building: 2

Level: 5

Mark: 2-528A

Room: CORRIDOR

Description: 3' 0" x 7' 0" x 1 3/4" WD.F Wood 3 Piece Hollow Metal

Secure Side



Hardware Set #: 55.95.50.4NS

Qty	Type	Description	Part Description	Finish	Power	Manufacturer
3	Hinge		Full Mortise - Heavy - 4-1/2"x4-1/2" - 5K			
1	Lockset		Cylindrical - Non-Electrified - Passage (F75) - Lever			

Hardware Set Notes:

Non-Secure Side



Issue Comments:

Opening Remarks:

Building: 2

Level: 5

Mark: 2-529A

Room: WORKROOM

Description: 3' 0" x 8' 10" x 1 3/4" WD.F Wood 3 Piece Hollow Metal None

Secure Side


Hardware Set #: 55.95.61.4KPNS

Qty	Type	Description	Part Description	Finish	Power	Manufacturer
4	Hinge		Full Mortise - Heavy - 4-1/2"x4-1/2" - 5K			
1	Lockset		Cylindrical - Non-Electrified - Passage (F75) - Lever			
1	Closer		Surface - Push Side - Parallel			
1	Plate		Plates - Kick Plate - Kick Plate Plexiglass			

Hardware Set Notes:

Non-Secure Side


Issue Comments:
Opening Remarks:


O1



O2

Building: 2

Level: 5

Mark: 2-530A

Room: WORKROOM

Description: 3' 0" x 8' 10" x 1 3/4" WD.F Wood 3 Piece Hollow Metal 20

Secure Side


Hardware Set #: 55.95.50.WS.DS

Qty	Type	Description	Part Description	Finish	Power	Manufacturer
4	Hinge		Full Mortise - Heavy - 4-1/2"x4-1/2" - 5K			
1	Lockset		Cylindrical - Non-Electrified - Passage (F75) - Lever			
1	Stop		Wall Stops - Door Stop			

Hardware Set Notes:

Non-Secure Side


Issue Comments:
Opening Remarks:


O1



O2



O3

Building: 2

Level: 5

Mark: 2-531A

Room: OFFICE

Description: 3' 0" x 8' 10" x 1 3/4" WD.F Wood 3 Piece Hollow Metal

Secure Side


Hardware Set #: 55.95.50.WS.DS

Qty	Type	Description	Part Description	Finish	Power	Manufacturer
4	Hinge		Full Mortise - Heavy - 4-1/2"x4-1/2" - 5K			
1	Lockset		Cylindrical - Non-Electrified - Passage (F75) - Lever			
1	Stop		Wall Stops - Door Stop			

Hardware Set Notes:

Non-Secure Side


Issue Comments:
Opening Remarks:


O1



O2

Building: 2

Level: 5

Mark: 2-532A

Room: OFFICE

Description: 3' 0" x 8' 10" x 1 3/4" WD.F Wood 3 Piece Hollow Metal

Hardware Set #: 55.95.50.WS.DS

Secure Side



Qty	Type	Description	Part Description	Finish	Power	Manufacturer
4	Hinge		Full Mortise - Heavy - 4-1/2"x4-1/2" - 5K			
1	Lockset		Cylindrical - Non-Electrified - Passage (F75) - Lever			
1	Stop		Wall Stops - Door Stop			

Hardware Set Notes:

Non-Secure Side



Issue Comments:

Opening Remarks:



Building: 2

Level: 5

Mark: 2-533A

Room: AUDITOR WORKROOM

Description: 3' 0" x 8' 10" x 1 3/4" WD.F Wood 3 Piece Hollow Metal

Secure Side



Hardware Set #: 55.95.50.WS.DS

Qty	Type	Description	Part Description	Finish	Power	Manufacturer
4	Hinge		Full Mortise - Heavy - 4-1/2"x4-1/2" - 5K			
1	Lockset		Cylindrical - Non-Electrified - Passage (F75) - Lever			
1	Stop		Wall Stops - Door Stop			

Hardware Set Notes:

Non-Secure Side



Issue Comments:

Opening Remarks:



Building: 2

Level: 5

Mark: 2-535A

Room: CONFERENCE ROOM

Description: 3' 0" x 8' 10" x 1 3/4" WD.F Wood 3 Piece Hollow Metal

Hardware Set #: 55.95.50.WS.DS

Secure Side



Qty	Type	Description	Part Description	Finish	Power	Manufacturer
4	Hinge		Full Mortise - Heavy - 4-1/2"x4-1/2" - 5K			
1	Lockset		Cylindrical - Non-Electrified - Passage (F75) - Lever			
1	Stop		Wall Stops - Door Stop			

Hardware Set Notes:

Non-Secure Side



Issue Comments:

Opening Remarks:



Building: 2

Level: 5

Mark: 2-536A

Room: OFFICE

Description: 3' 0" x 8' 10" x 1 3/4" WD.F Wood 3 Piece Hollow Metal

Hardware Set #: 55.95.50.WS.DS

Secure Side



Qty	Type	Description	Part Description	Finish	Power	Manufacturer
4	Hinge		Full Mortise - Heavy - 4-1/2"x4-1/2" - 5K			
1	Lockset		Cylindrical - Non-Electrified - Passage (F75) - Lever			
1	Stop		Wall Stops - Door Stop			

Hardware Set Notes:

Non-Secure Side



Issue Comments:

Opening Remarks:

Building: 2

Level: 6

Mark: 2-600B

Room: ROOF ENCL

Description: 3' 0" x 7' 0" x 1 3/4" HM.F Hollow Metal 3 Piece Hollow Metal None

Issue Codes: **D2**

Secure Side


Hardware Set #: 55.05.71.4SNS.LG

Qty	Type	Description	Part Description	Finish	Power	Manufacturer
3	Hinge		Full Mortise - Heavy - 4-1/2"x4-1/2" - 5K - Ball Bearing Issue Code: H4			
1	Lockset		Cylindrical - Non-Electrified - Ent/Off (F109) - Lever			
1	Closer		Surface - Push Side - Parallel			
1	Gasketing		Perimeter Gasketing - Surface Issue Code: GA1			

Non-Secure Side


Hardware Set Notes:
Issue Comments:

 D2: Door damaged (bent, dented, delaminating)
Issue Status: Non-Compliant

 GA1: Gasketing/smoke seal missing/damaged/installed incorrectly
Issue Status: Non-Compliant

 H4: Hinge fastener(s) stripped, loose, missing or broken
Issue Status: Non-Compliant

Opening Remarks:


O1



D2-1



D2-2



H4-1



H4-2



GA1-1

Building: 2

Level: 6

Mark: 2-601A

Room: ROOF ENCL

Description: 3' 0" x 7' 0" x 1 3/4" HM.F Hollow Metal 3 Piece Hollow Metal

Issue Codes: **D2**

Secure Side


Hardware Set #: 55.37.71.4SNS-1

Qty	Type	Description	Part Description	Finish	Power	Manufacturer
3	Hinge		Full Mortise - Heavy - 4-1/2"x4-1/2" - 5K Issue Code: H4			
1	Lockset		Cylindrical - Non-Electrified - Class (F84) - Lever			
1	Closer		Surface - Push Side - Parallel Issue Code: CL3			
1	Gasketing		Perimeter Gasketing - Surface			

Non-Secure Side


Hardware Set Notes:
Issue Comments:

 CL3: Missing/damaged/broken arm
 Issue Status: Non-Compliant

 D2: Door damaged (bent, dented, delaminating)
 Issue Status: Non-Compliant

 H4: Hinge fastener(s) stripped, loose, missing or broken
 Issue Status: Non-Compliant

Opening Remarks:


D2-1



CL3-1



H4-1

Building: 2

Level: 6

Mark: 2-602A

Room: ROOF ENCL

Description: 3' 0" x 7' 0" x 1 3/4" HM.F Hollow Metal 3 Piece Hollow Metal

Issue Codes: **D2**

Secure Side


Hardware Set #: 55.95.61.4SNS

Qty	Type	Description	Part Description	Finish	Power	Manufacturer
4	Hinge		Full Mortise - Heavy - 4-1/2"x4-1/2" - 5K Issue Code: H4			
1	Lockset		Cylindrical - Non-Electrified - Passage (F75) - Lever			
1	Closer		Surface - Push Side - Parallel Issue Code: CL3			
1	Gasketing		Perimeter Gasketing - Surface			

Non-Secure Side


Hardware Set Notes:
Issue Comments:

 CL3: Missing/damaged/broken arm
 Issue Status: Non-Compliant

 D2: Door damaged (bent, dented, delaminating)
 Issue Status: Non-Compliant

 H4: Hinge fastener(s) stripped, loose, missing or broken
 Issue Status: Non-Compliant

Opening Remarks:


CL3-1



D2-1



H4-1



Building: 1

Level: 1

Mark: 2-ADD.ADA

Room: VESTIBULE

Description: 3' 0" x 7' 0" x 1 3/4" AL.FG Aluminum AL.LSL.TR Aluminum

Hardware Set #: 05.13.68.3SCVNS-2A

Secure Side



Qty	Type	Description	Part Description	Finish	Power	Manufacturer
3		Pivot	Pivot - Floor Mount - Offset - 3/4" Offset			
1		Exit Device	Concealed Vertical Rod - Classroom - Pull - Cylinder Dogging			
1		Door Operator	High-Energy - Surface			
1		Gasketing	Perimeter Gasketing - Surface			
2		Electronic Control	Actuator			

Non-Secure Side



Hardware Set Notes:

Issue Comments:

Opening Remarks: